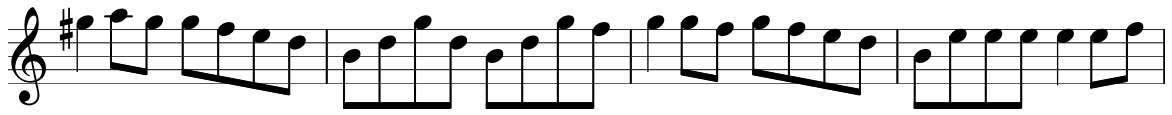
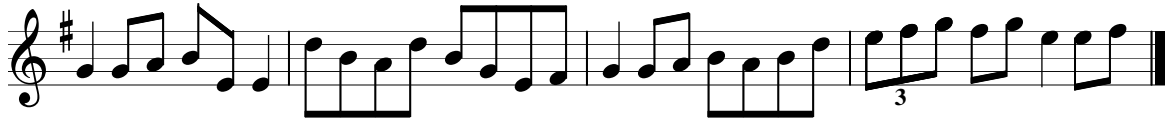


# Kennedy's Favourite

## The Hare's Paw



# The Woman of the House

The image displays a musical score for the piece "The Woman of the House". It consists of four staves of music, all written in treble clef with a key signature of one sharp (F#) and a common time signature (C). The first staff begins with a treble clef, a sharp sign, and a common time signature. The melody is primarily composed of eighth and sixteenth notes, with a triplet of eighth notes in the second measure. The second staff continues the melody, featuring a triplet of eighth notes in the third measure. The third staff shows a continuation of the melodic line with various rhythmic patterns. The fourth staff concludes the piece with a final triplet of eighth notes and a double bar line with repeat dots. The overall style is that of a simple, folk-like melody.