

CHAMPAGNE

Bass

Jacques Higelin

Intro

Musical staff for the Intro section, measures 1-9. The key signature is two sharps (F# and C#) and the time signature is 4/4. The staff contains a whole rest in measure 1, followed by quarter notes in measures 2-4, and quarter notes in measures 5-9. Measures 3, 4, 5, 8, 9, and 10 contain repeat signs.

Musical staff for the Intro section, measures 10-17. The staff contains quarter notes in measures 10-12, and quarter notes in measures 13-17. Measures 11, 12, 13, 16, and 17 contain repeat signs.

Musical staff for the Couplet 1 section, measures 18-25. The staff contains quarter notes in measures 18-20, and quarter notes in measures 21-25. Measures 19, 20, 21, 24, and 25 contain repeat signs.

Musical staff for the Couplet 1 section, measures 26-33. The staff contains quarter notes in measures 26-28, and quarter notes in measures 29-33. Measures 27, 28, 29, 32, and 33 contain repeat signs.

Musical staff for the Couplet 1 section, measures 34-41. The staff contains quarter notes in measures 34-36, and quarter notes in measures 37-41. Measures 35, 36, 37, 40, and 41 contain repeat signs.

Musical staff for the Couplet 1 section, measures 42-49. The staff contains quarter notes in measures 42-44, and quarter notes in measures 45-49. Measures 43, 44, 45, 48, and 49 contain repeat signs.

Musical staff for the Couplet 1 section, measures 50-57. The staff contains half notes in measures 50-51, and quarter notes with accents in measures 52-57. Measures 51, 52, 53, 56, and 57 contain repeat signs.

Musical staff for the Couplet 1 section, measures 58-65. The staff contains half notes in measures 58-59, and quarter notes with accents in measures 60-65. Measures 59, 60, 61, 64, and 65 contain repeat signs.

Musical staff for the Couplet 1 section, measures 66-73. The staff contains half notes in measures 66-67, and half notes in measures 68-73. Measure 67 contains the number 16 above it. Measures 66, 67, 70, 71, and 72 contain repeat signs.

Couplet 2

74

82

90

98

106

114

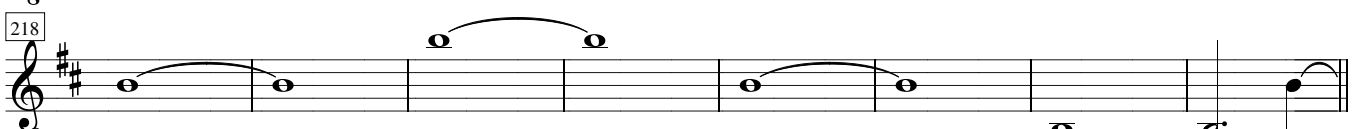
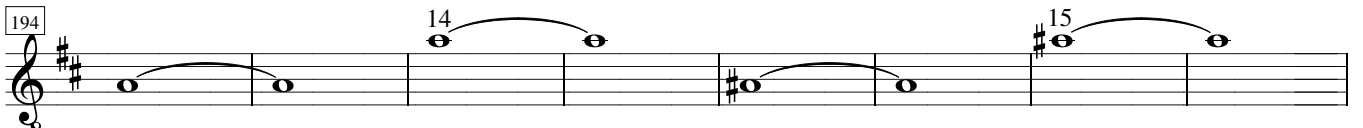
122

130

138

146

154 *Couplet 3*



226 *Final*

