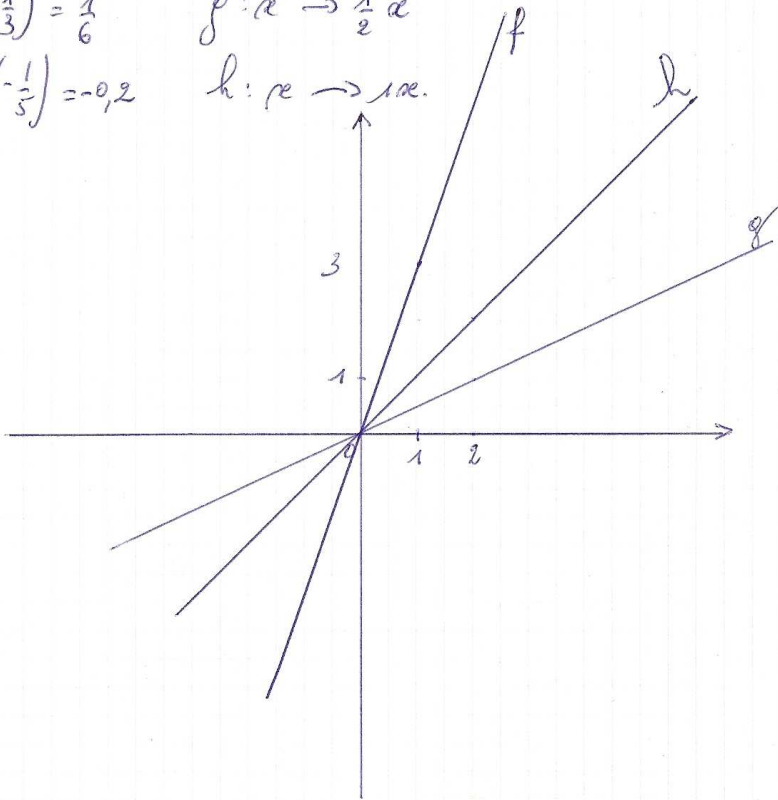


n° 42

$$f(3) = 9 \quad f: x \rightarrow 3x$$

$$g\left(\frac{1}{3}\right) = \frac{1}{6} \quad g: x \rightarrow \frac{1}{2}x$$

$$h\left(-\frac{1}{5}\right) = -0,2 \quad h: x \rightarrow 10x$$



n° 43

1. $f: L \rightarrow l = \frac{1}{12}L$

2. $f(3,80) = \frac{1}{12} \cdot 3,80 \text{ m} = 0,316 \dots \text{ m} = 31,7 \text{ cm.}$

Impossible de placer la moquette sur l'étoyer.

n° 44

	Prix initial		Prix en 2002		Prix en 2003
Pays A	x	\longrightarrow	$1,06x$	\longrightarrow	$1,06(1,06x) = 1,1236x$
Pays B	x	\longrightarrow	$1,10x$	\longrightarrow	$1,02(1,10x) = 1,122x$

Augmentation pays A $12,36\%$
 Pays B $12,20\%$