

Renzo Piano Building Workshop



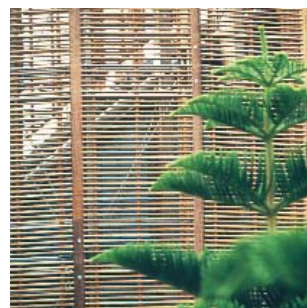
J.M. Tjibaou Cultural Centre

**Nouméa, New Caledonia
1991-1998**

The Centre, entirely devoted to the Kanak culture, lies on a narrow strip of land surrounded by water.

Ten pavilions modelled after the shape of traditional kanak huts, with heights varying from 20 to 28 metres, are at the core of the scheme.

Organized in groups of thematic villages, the pavilions are immersed in vegetation, thus expressing the millenary kanak relationship with nature.



Housing cultural facilities (exhibition rooms, a library, an auditorium, an amphitheatre and studios for traditional activities), the huts are made of iroko wood, combined with steel and glass, and built respecting traditional construction methods according to the most sophisticated engineering studies.

These contrasts are the expression of the essential challenge of the project: that of paying homage to a culture with its traditions without falling into a parody of it.

