

MEDSEACAN / CORSEACAN  
Bilan des données sur les macro déchets

F Galgani, IFREMER / LER/ Bastia - Marseille, 25/06/13

MEDITS  
1994 - 2013

A grid of 16 small maps showing the progression of MEDITS surveys in the Mediterranean Sea from 1994 to 2013.

Plongées Nautile / Cyana 1995-2000      MEDITS/corse 1995-2009

Marseille, 31/01-01/02/2011

MEDSEACAN / CORSEACAN

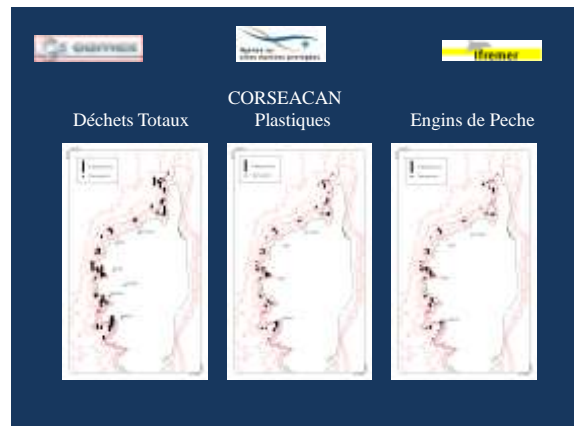
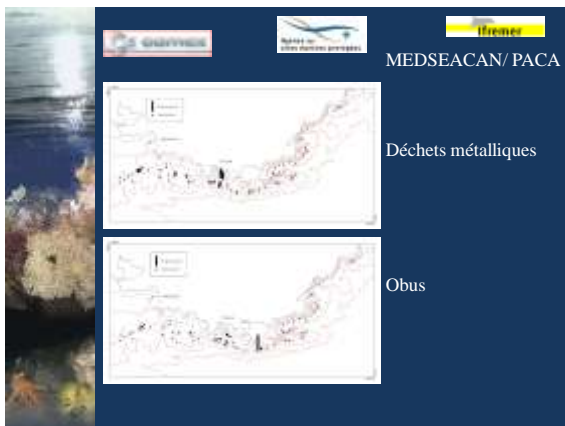
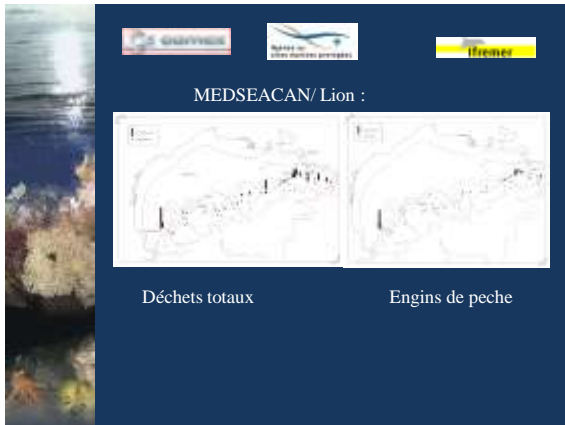
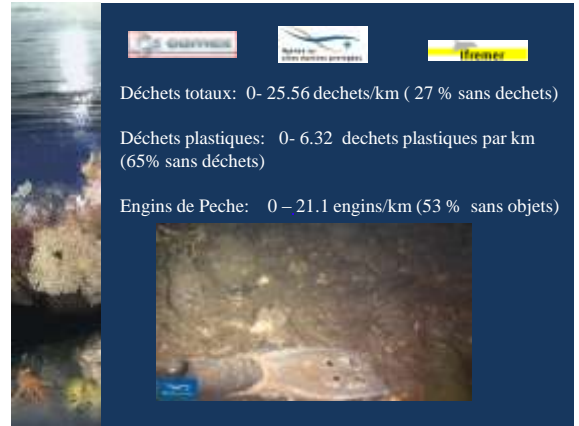
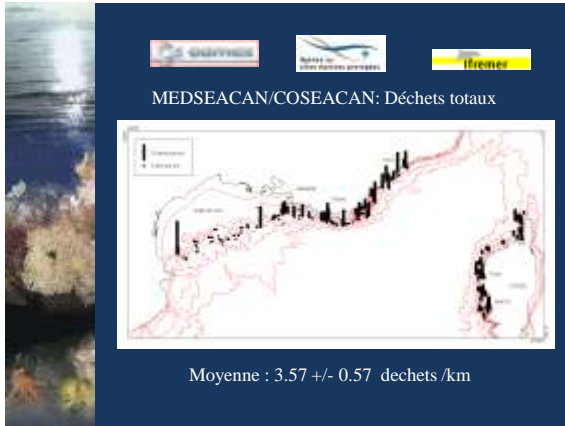
- 206 plongées ROV + 42 plongées submersible analysées (logs)
- Boîtes 1-12
- Profondeur 750- 80m
- Catégories: Déchets totaux/ plastiques/ métaux/ verre/ peche/ divers
- Unités : items / km de route
- Zones non chalutables (Ouest Corse, Pente continentale)

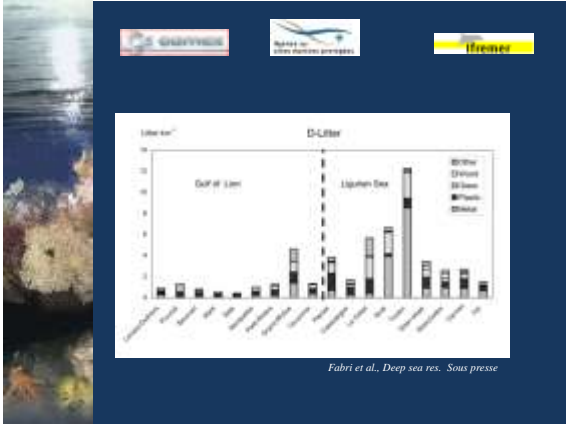
Four underwater photographs showing various marine organisms and debris on the seabed.

Marseille, 31/01-01/02/2011

MEDSEACAN : A: plongée P4, 374 m. B: lignes de peche, plongée D7, 465 m. C: munitions, Toulon, plongée P5, 495 m. D: plastique , Planier, plongée P8, 397 m.

Four panels (A, B, C, D) showing different underwater survey locations with various debris and marine life.





- PERSPECTIVES ET INTERET:**
- Analyse Boite 13
  - Etude des canyons Est Corse
  - Bilan des zones plus profondes
  - Article scientifique?

