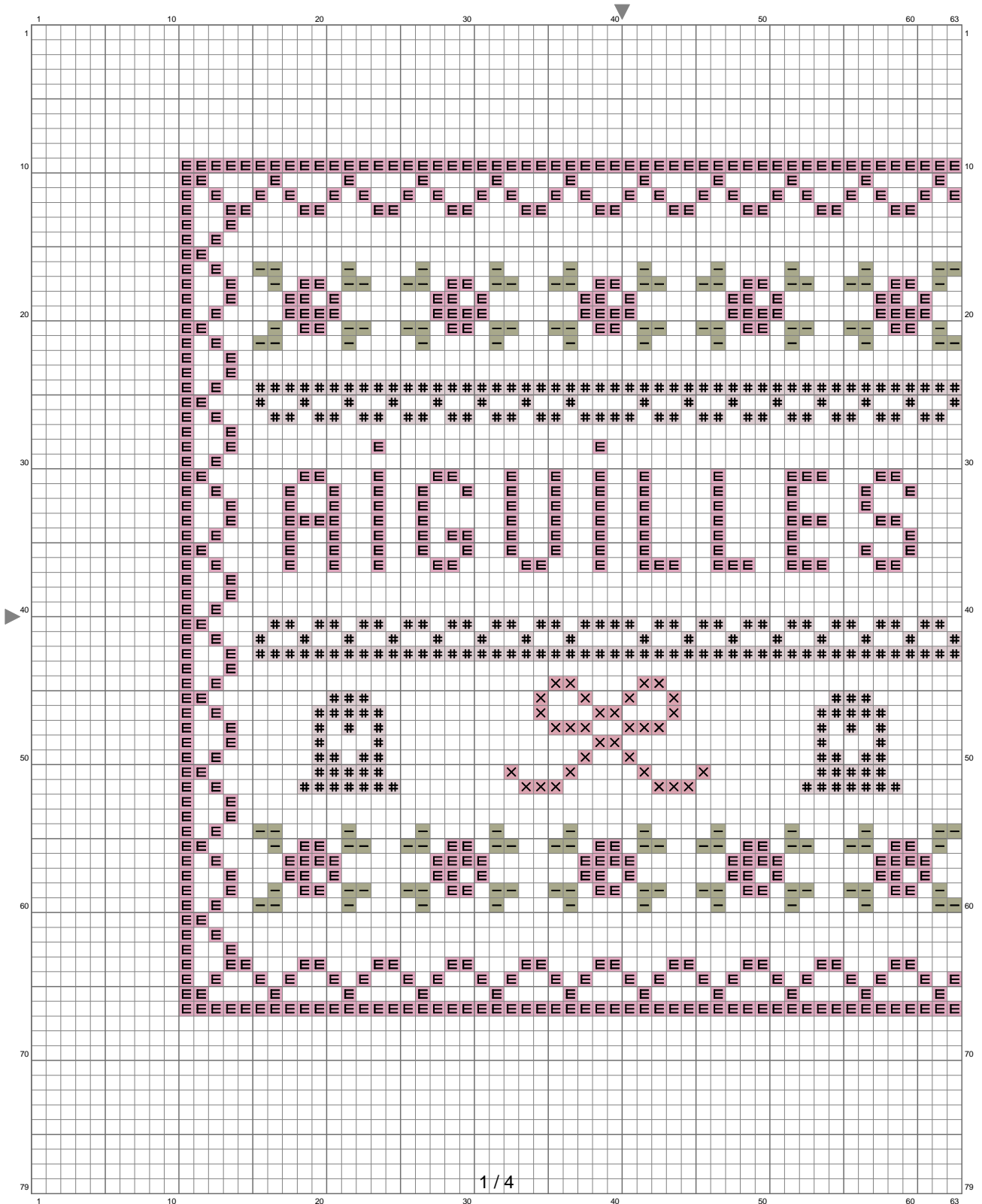
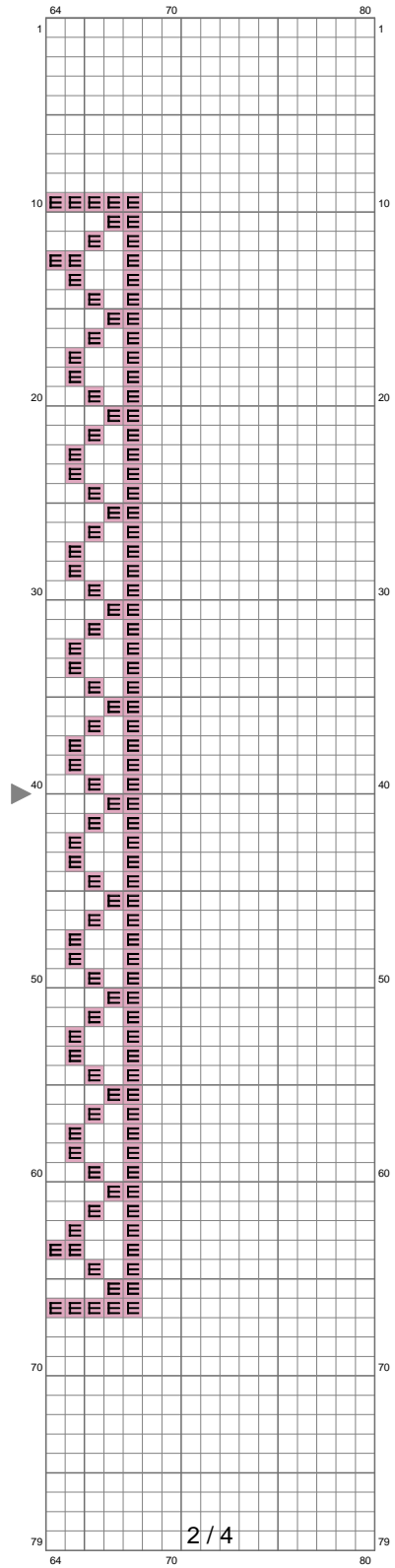


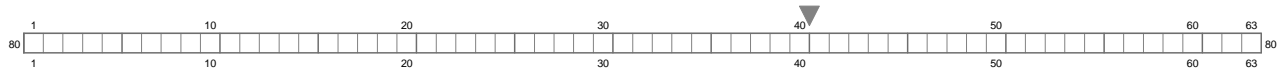
# Untitled



# Untitled

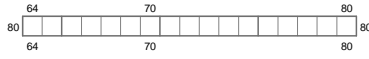


# Untitled



(This chart is printed using KG-Chart LE for Cross Stitch.)

# Untitled



(This chart is printed using KG-Chart LE for Cross Stitch.)

Stitch Count: 80w x 80h

Finished Size: 25.4 cm x 25.4 cm (16 ct./inch)

Cloth: Linen





Cloth's Color: White

# of colors: 4 Colors

## Color Table (DMC)

---

### Cross Stitch

	3727	(652 ct)
	3053	(120 ct)
	778	(32 ct)
	453	(250 ct)