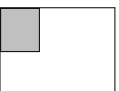
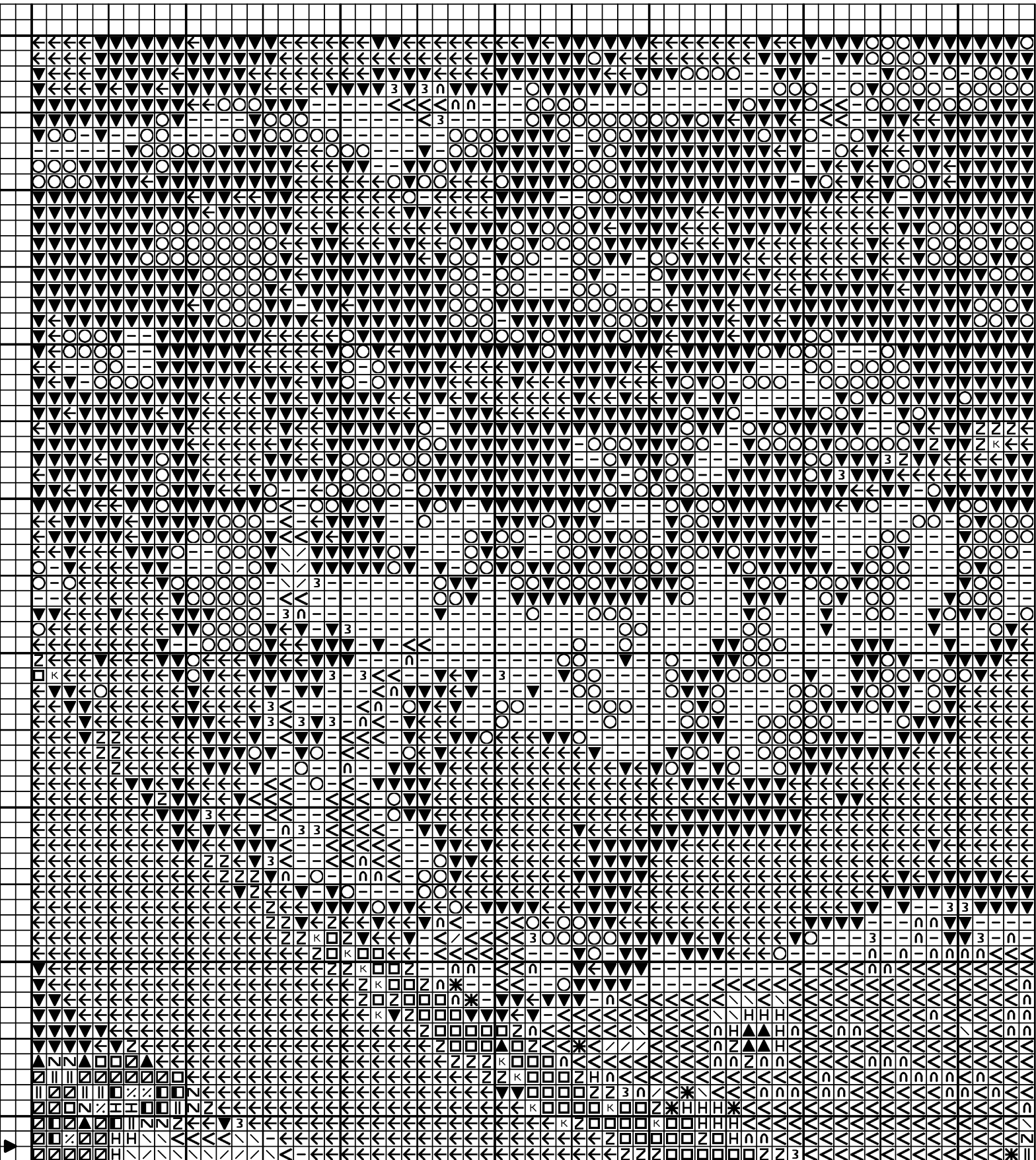
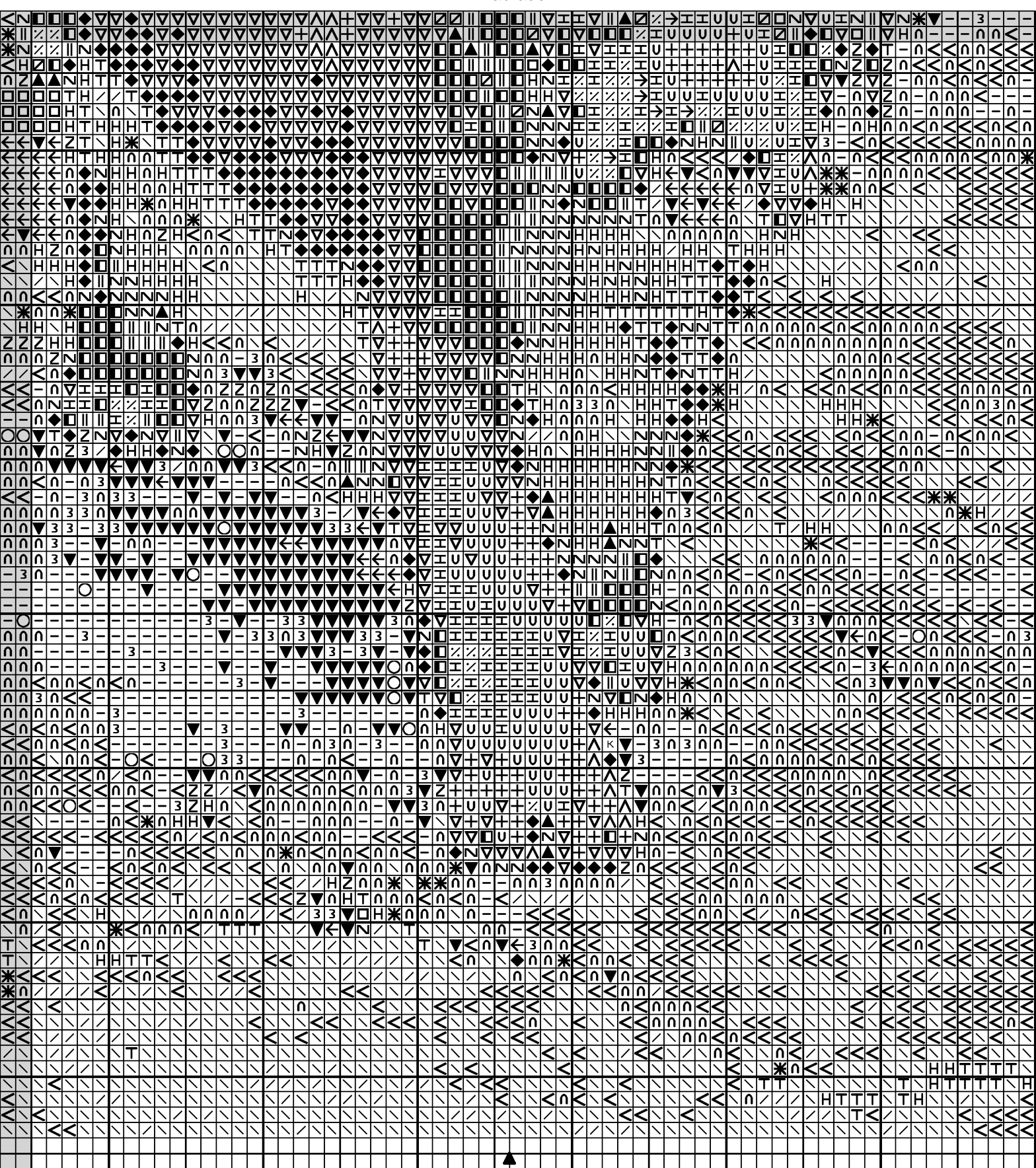


Labrador

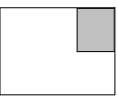
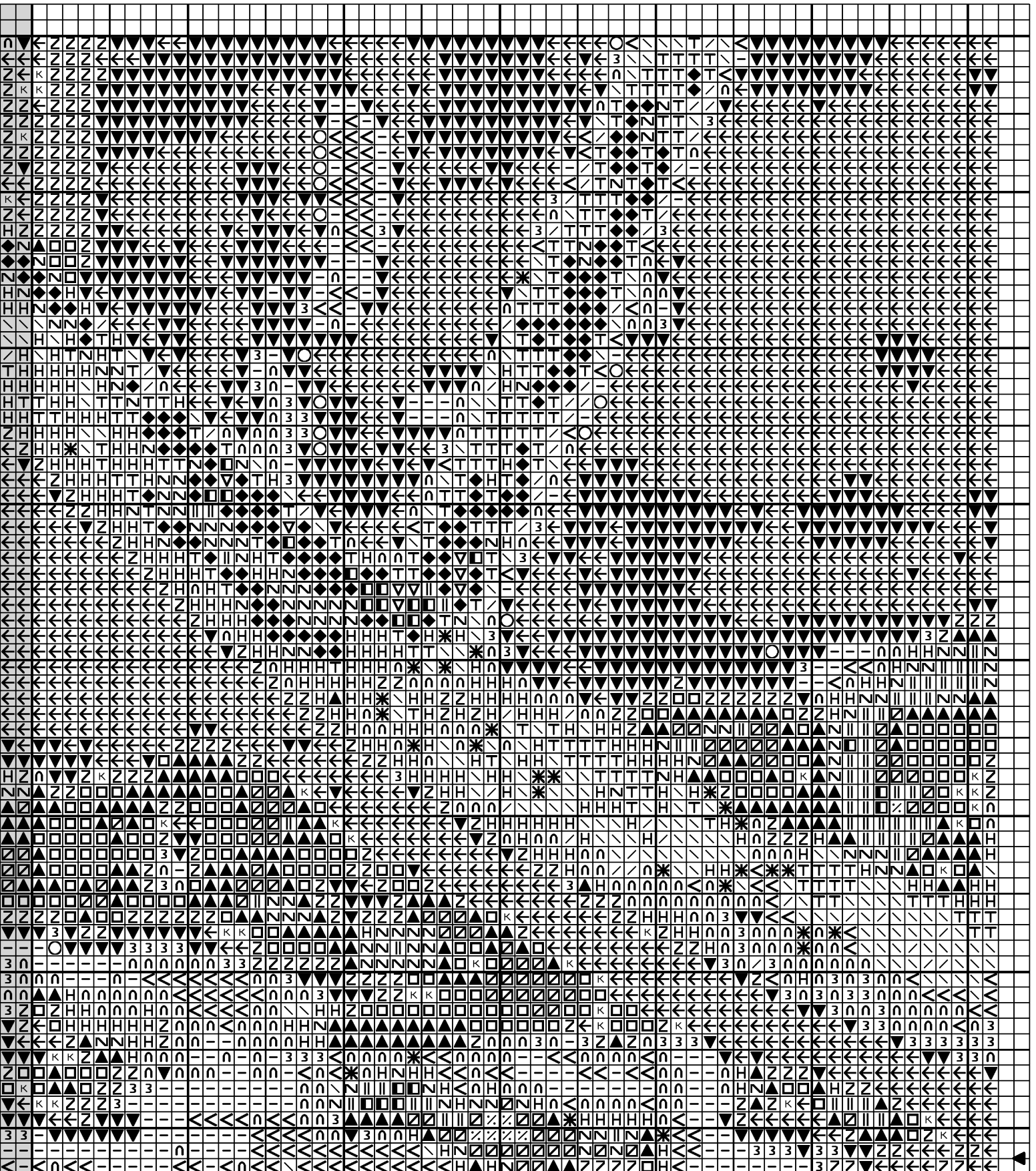


The image displays a 100x100 grid filled with a complex, repeating pattern of characters. The characters are primarily lowercase letters (a-z), numbers (0-9), and symbols (asterisk, arrow, hash, dollar sign, percent sign, ampersand, at sign, exclamation point, question mark, colon, semicolon, comma, period, slash, backslash, underscore, equals, plus, minus, multiply, divide, less than, greater than, less than or equal to, greater than or equal to, not equal to, infinity, and various punctuation marks). The pattern is dense and appears to be a form of data visualization or a complex text-based art piece. The characters are arranged in a way that creates a sense of depth and complexity, with some characters appearing more frequently than others. The overall effect is a highly detailed and intricate visual structure.





Labrador





		DMC
○	Bleu marine tr fc	939
-	Bleu passé fc	930
>	Vert de gris fc	3768
\	Vert écume my	502
*	Vert écume fc	501
T	Vert fougère cl	523
▽	Beige cl	3047
∴	Beige my	3046
^	Blanc cassé	746
u	Or vieilli tr cl	677
+	Chair tr tr cl	3770
→	Or d'automne cl	3855
H	Tanné cl	738
κ	Brun clair	3371
□	Beige moka cl	3864
▣	Beige moka	3863
▲	Grège tr fc	640
Z	Marron glacé fc	3021
H	Marron glacé my	3022
◆	Moka my	3782
Z	Moka my fc	3032
	Beige brun cl	841
□	Beige brun fc	839
∩	Gris castor tr fc	645
/	Phoque fc	169
3	Gris étain fc	413
▼	Gris étain tr fc	3799
←	Noir	310

Nombre de points : 192 x 144

Note : Merci de respecter mon travail !

Ne vendez pas cette grille

Ne la copiez pas sur votre site