

Etape 1 : délimiter la feuille de travail

Milieu dos

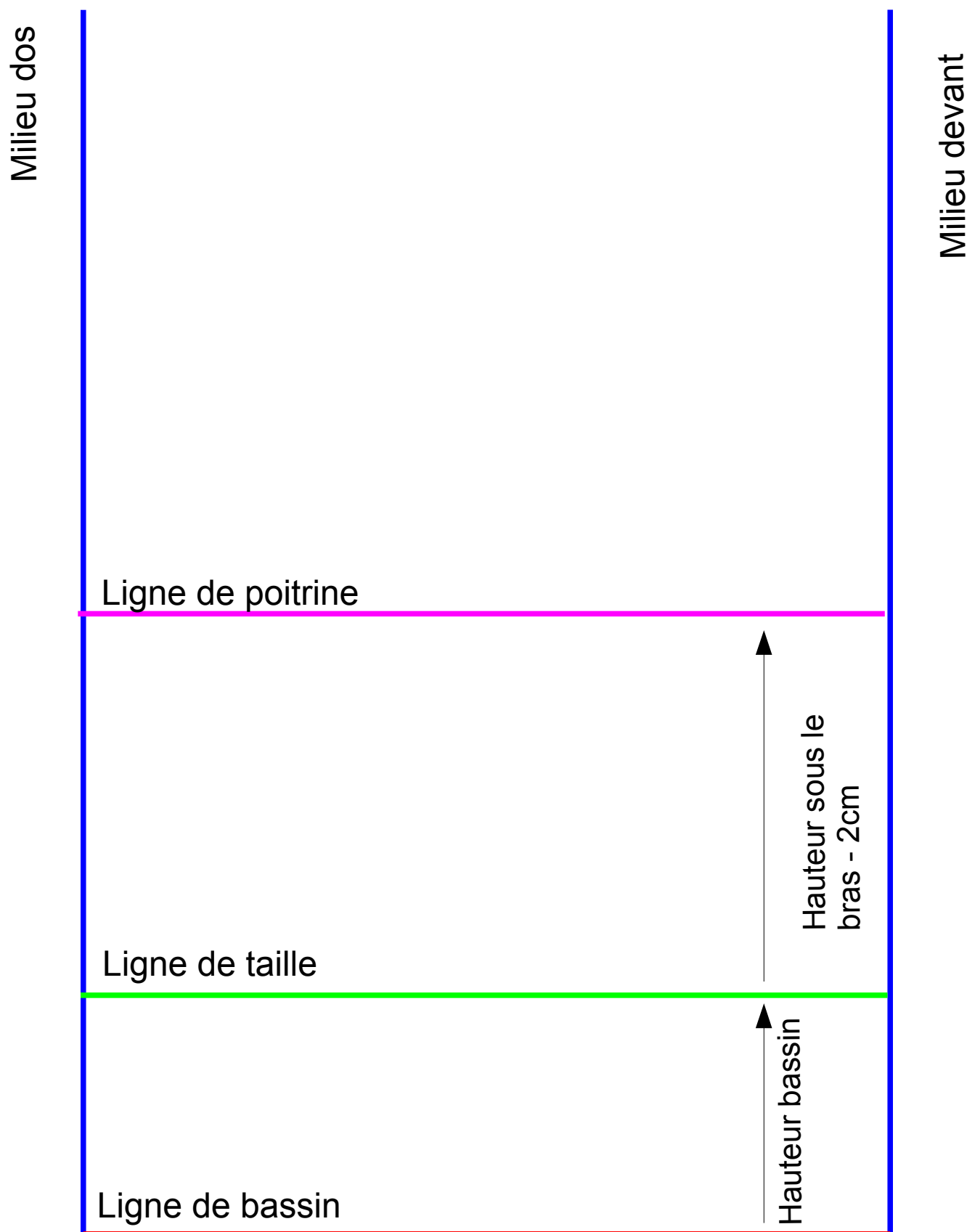
Hauteur = longueur corsage
devant + 30 cm

Largeur = contour bassin + 10 cm

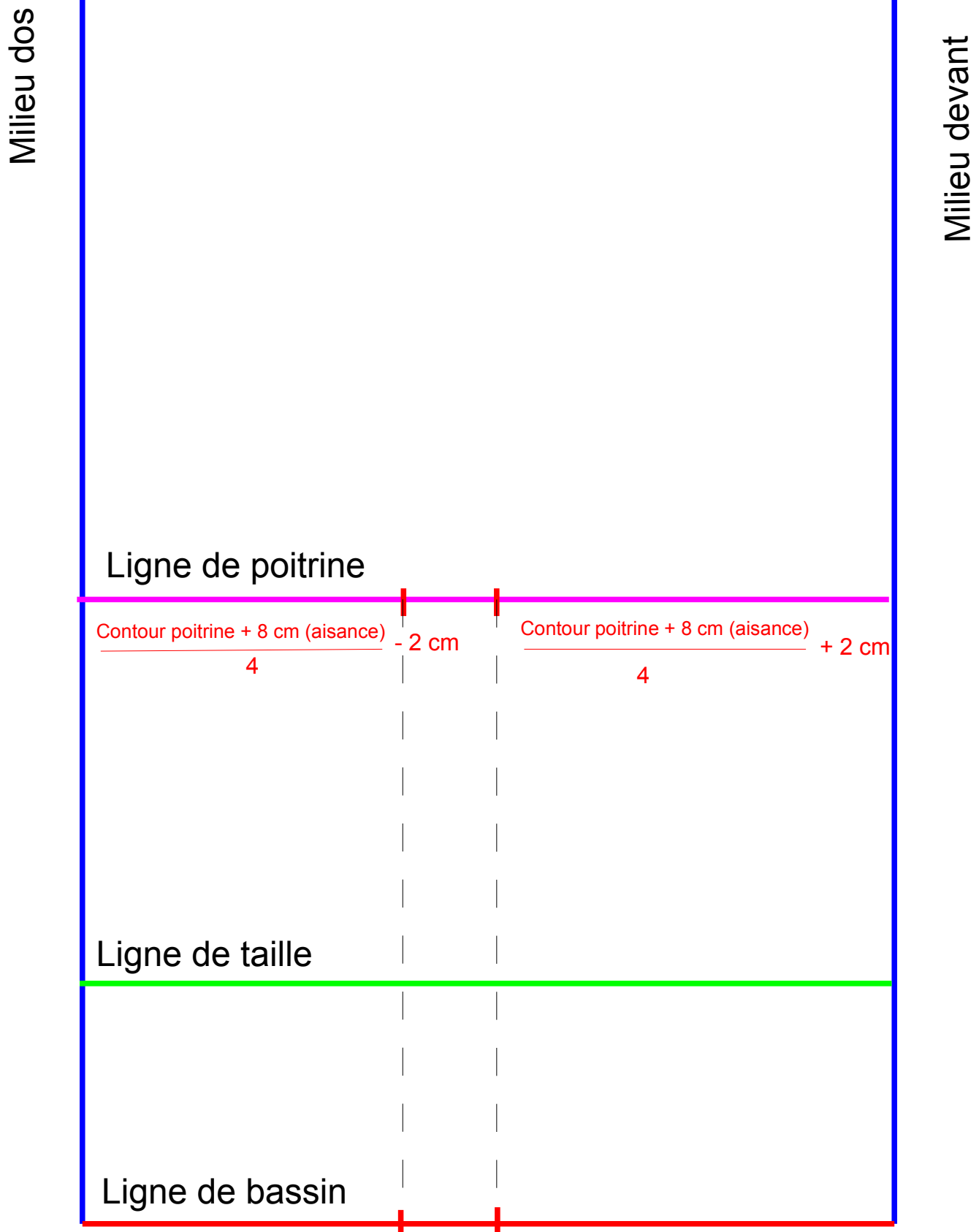
Milieu devant

Ligne de bassin

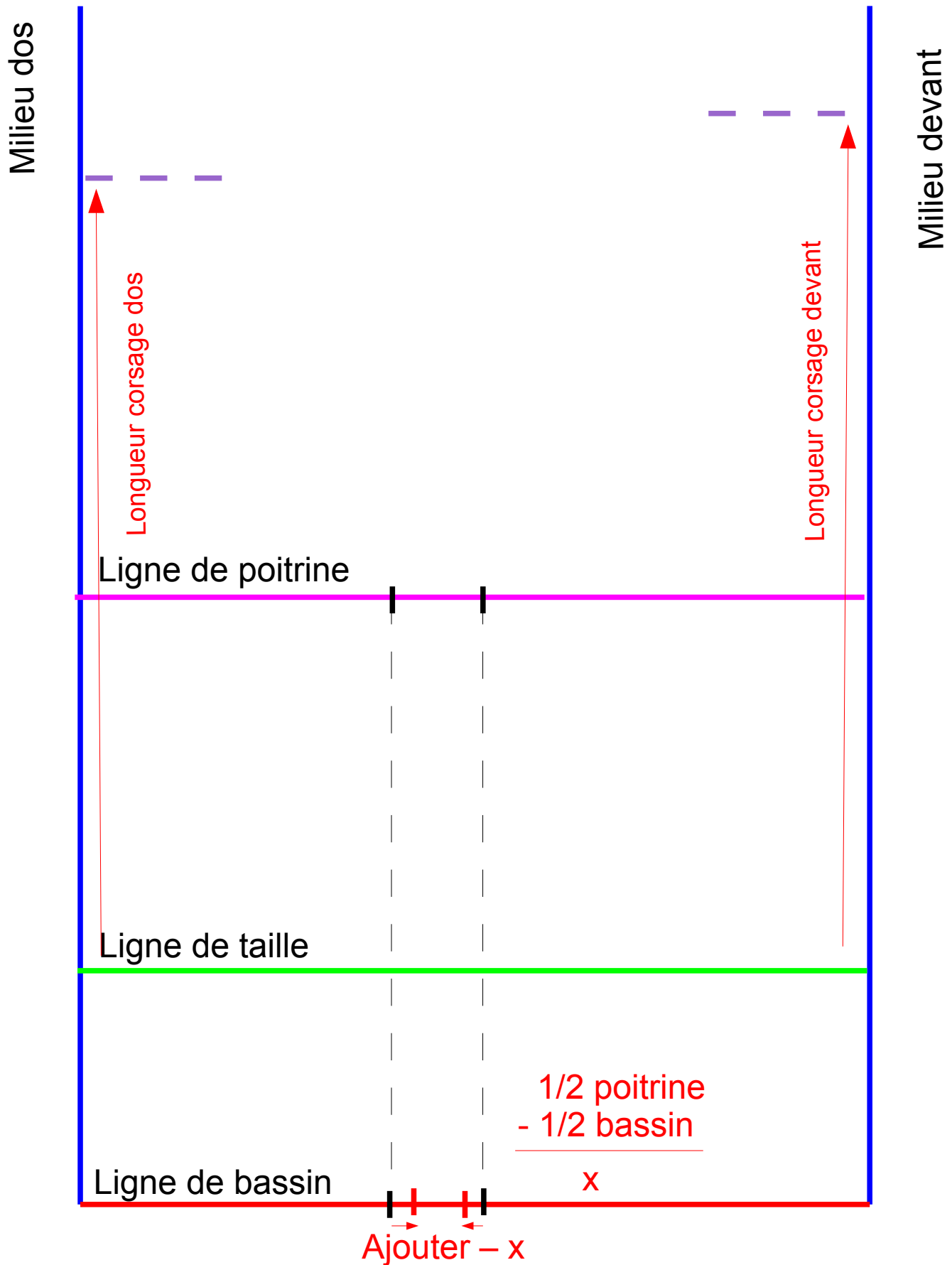
Etape 2 : Tracer les premières lignes



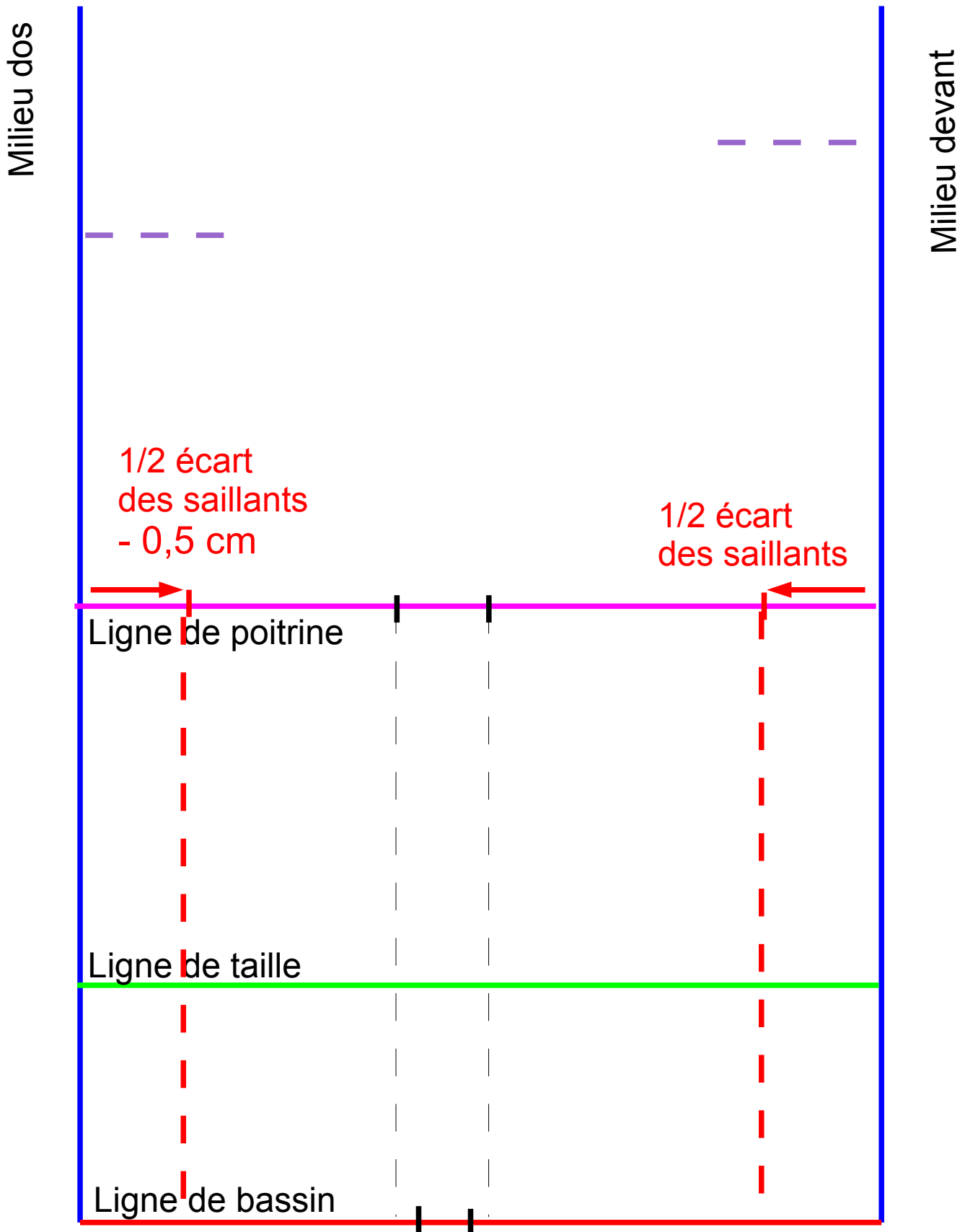
Etape 3 : Le contour poitrine



Etape 4 : Le contour bassin et la longueur corsage



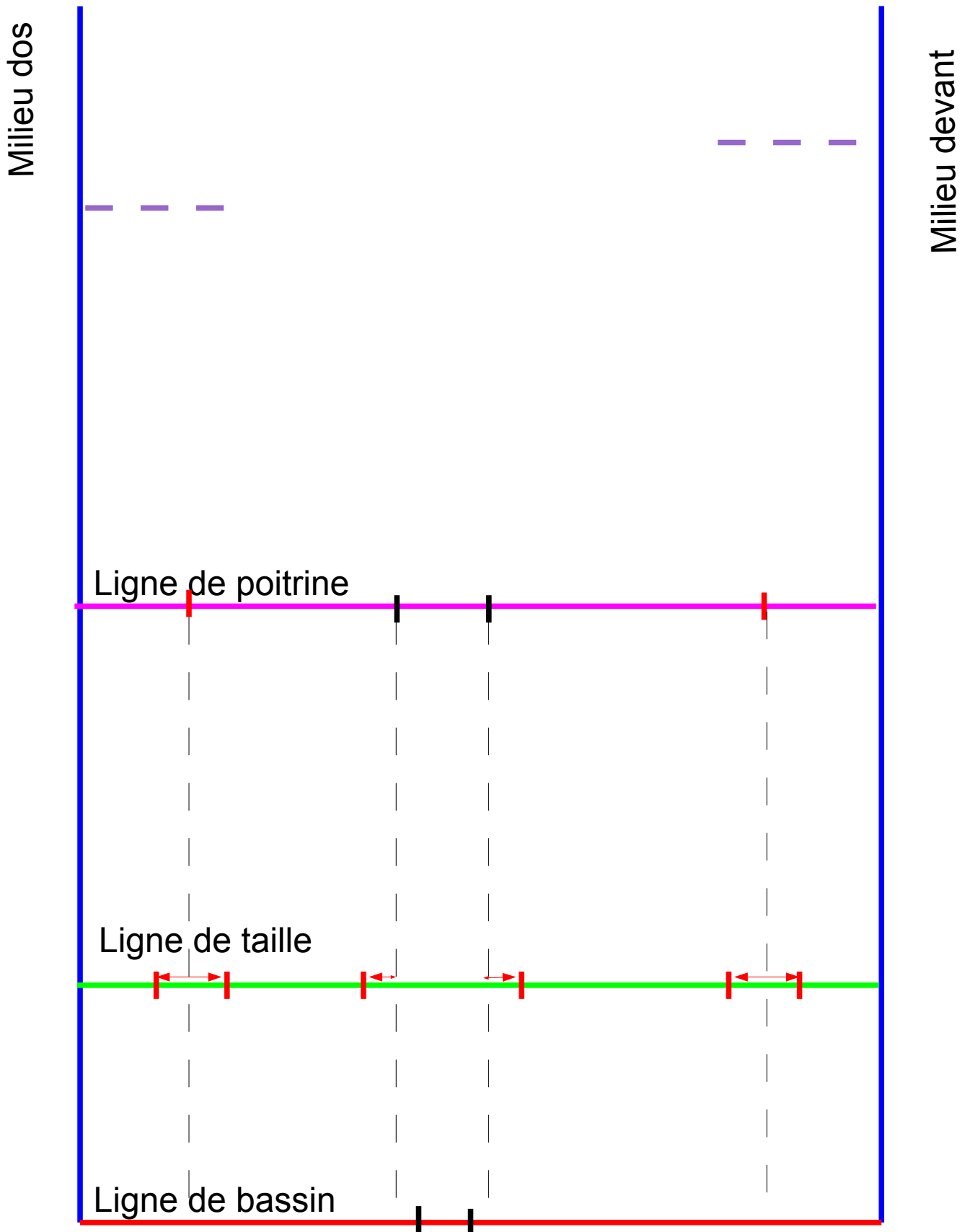
Etape 5 : L'axe des pinces



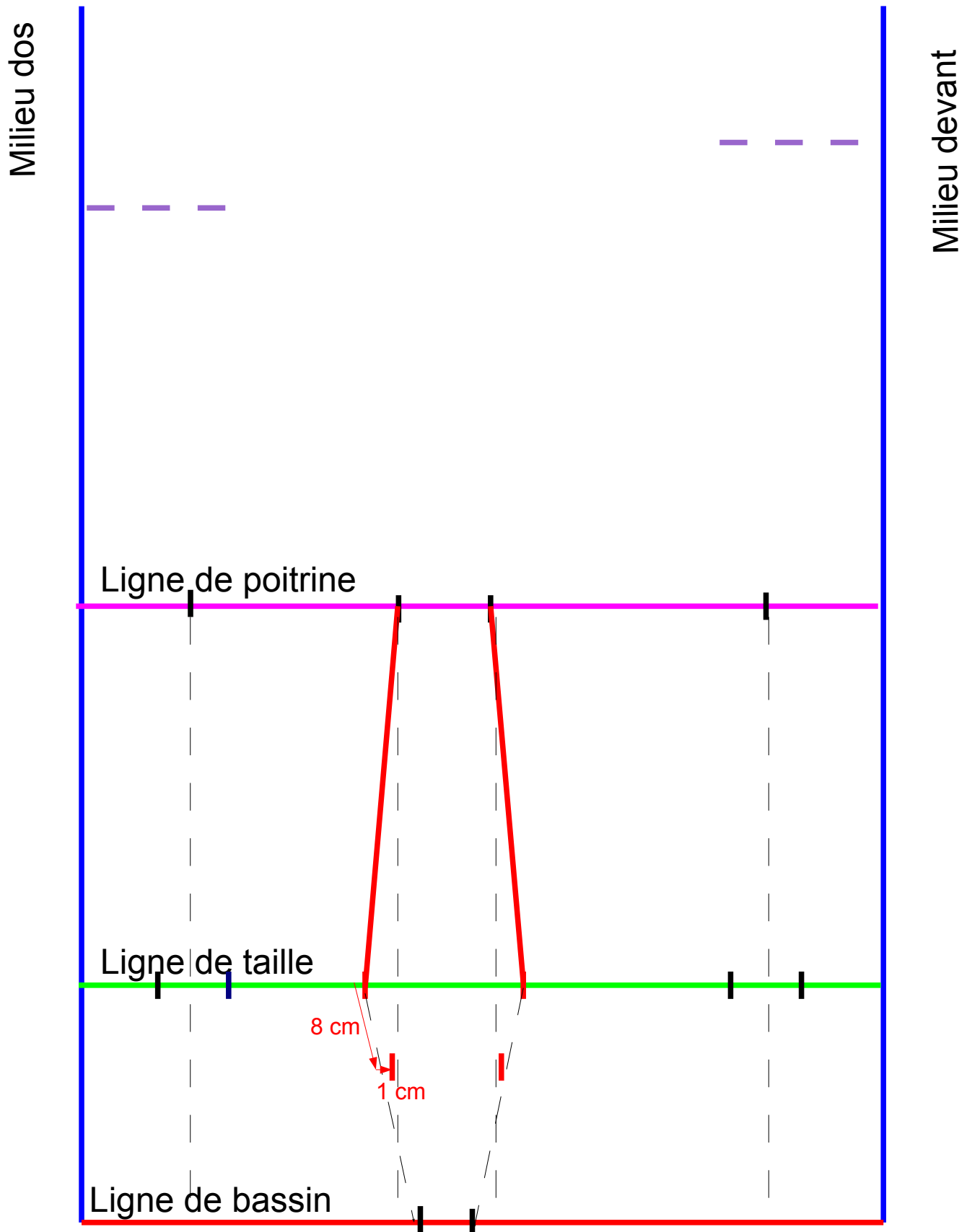
Etape 6 : L'excédent taille

$$1/2 \text{ poitrine} - 1/2 \text{ taille} = y$$

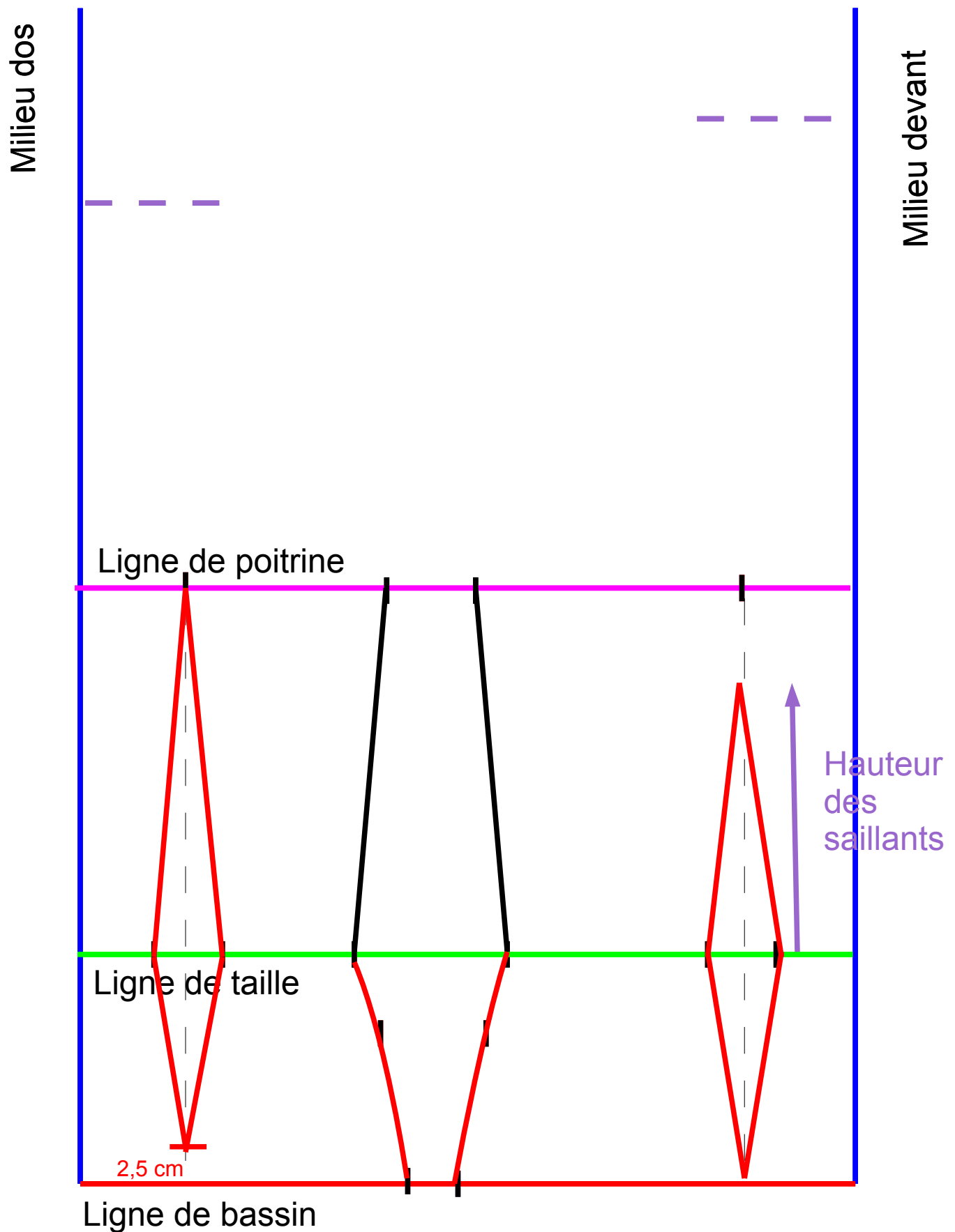
$$y/4 = y' \quad (\text{pince} > \text{taille})$$



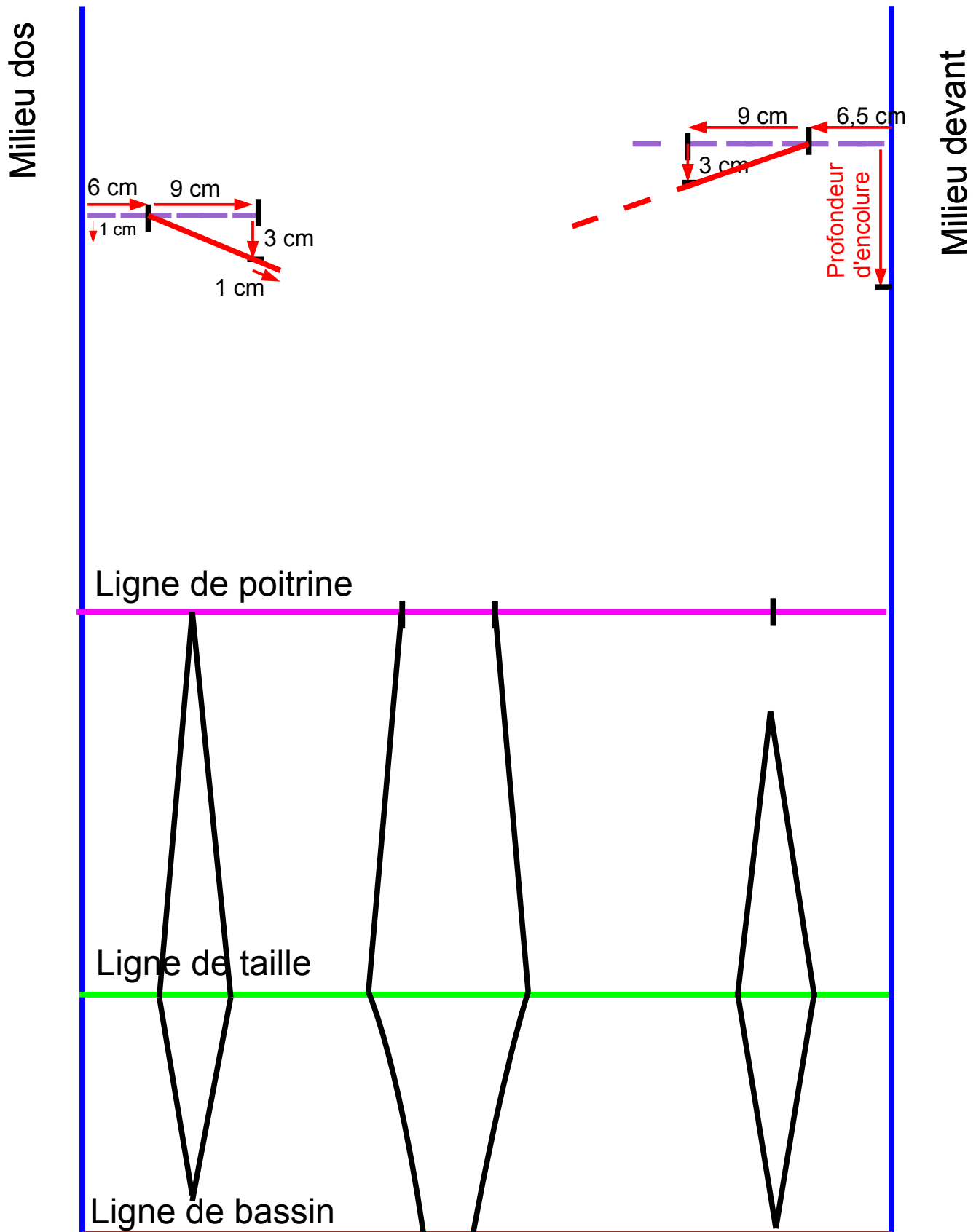
Etape 7 : Le tracé des pinces



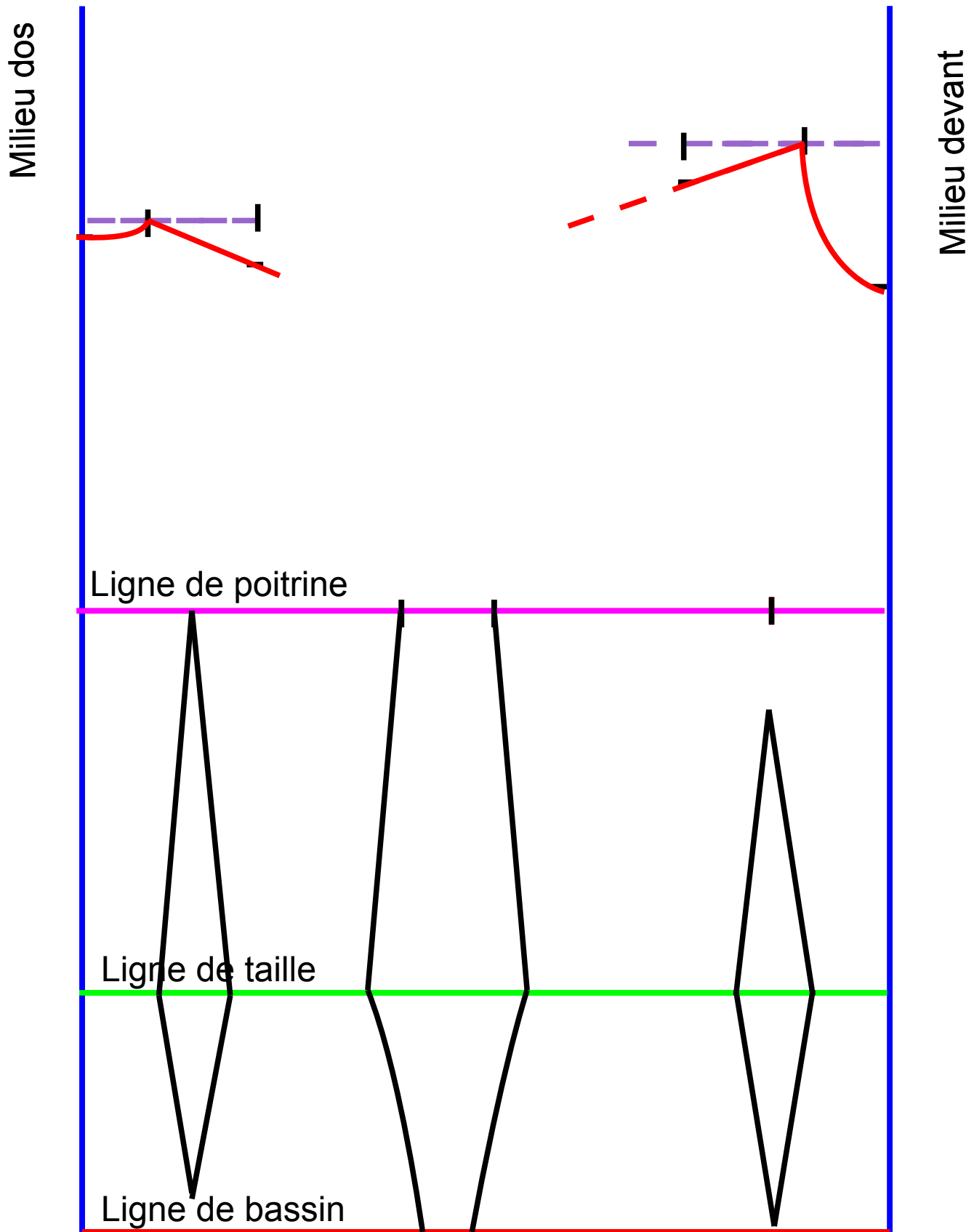
Etape 7 : Le tracé des pinces (suite)



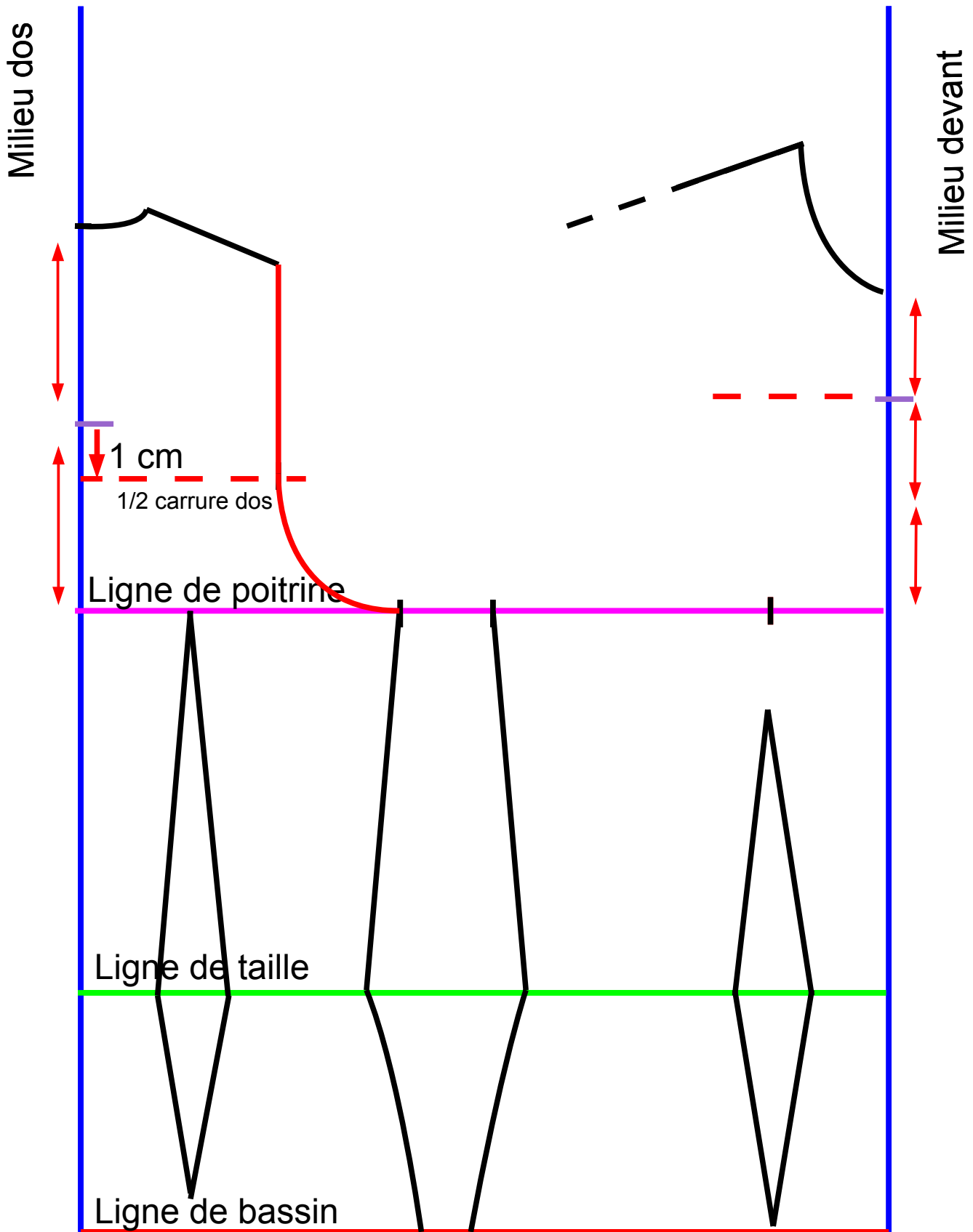
Etape 8 : L'encolure et l'épaule



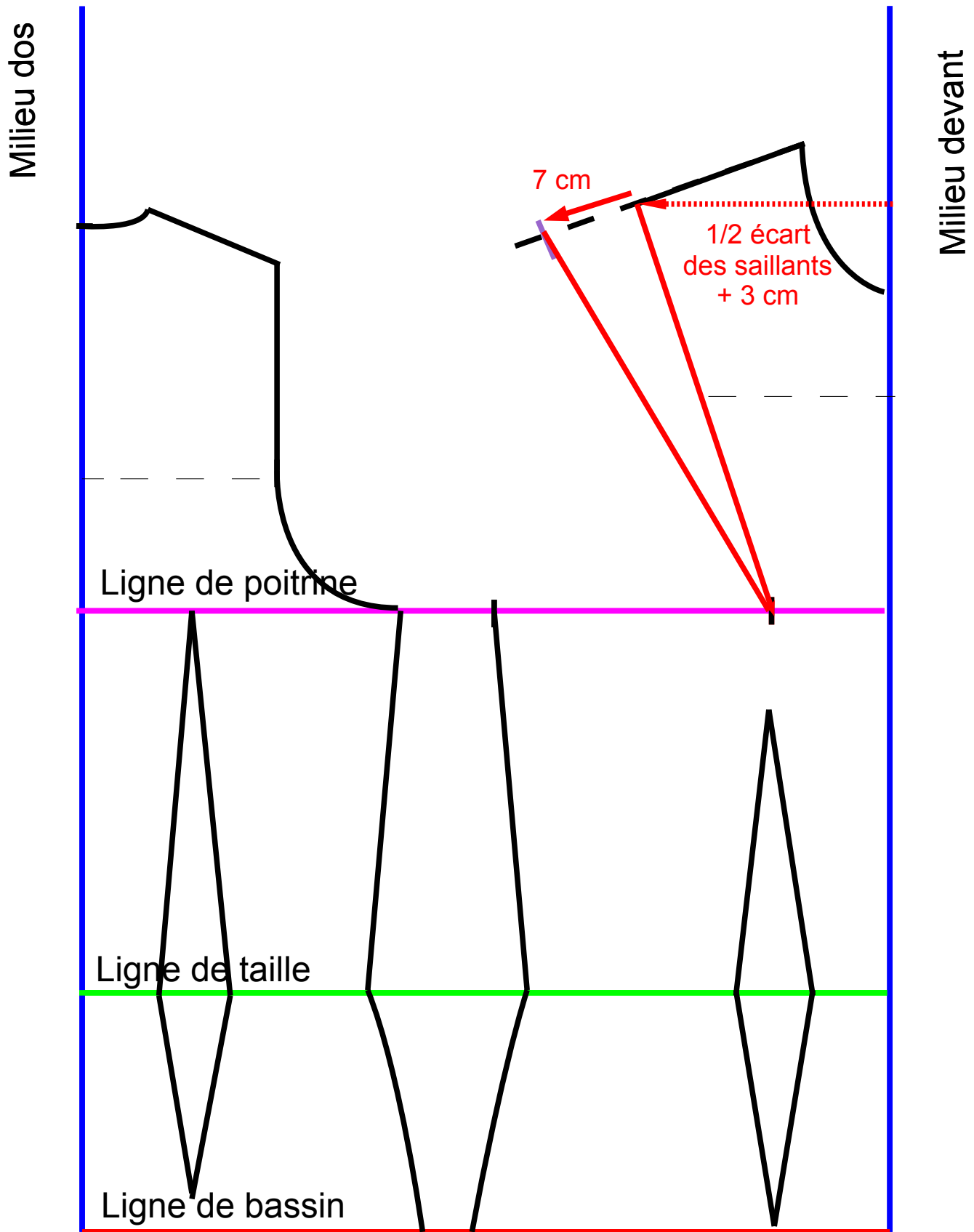
Etape 8 : L'encolure et l'épaule (suite)



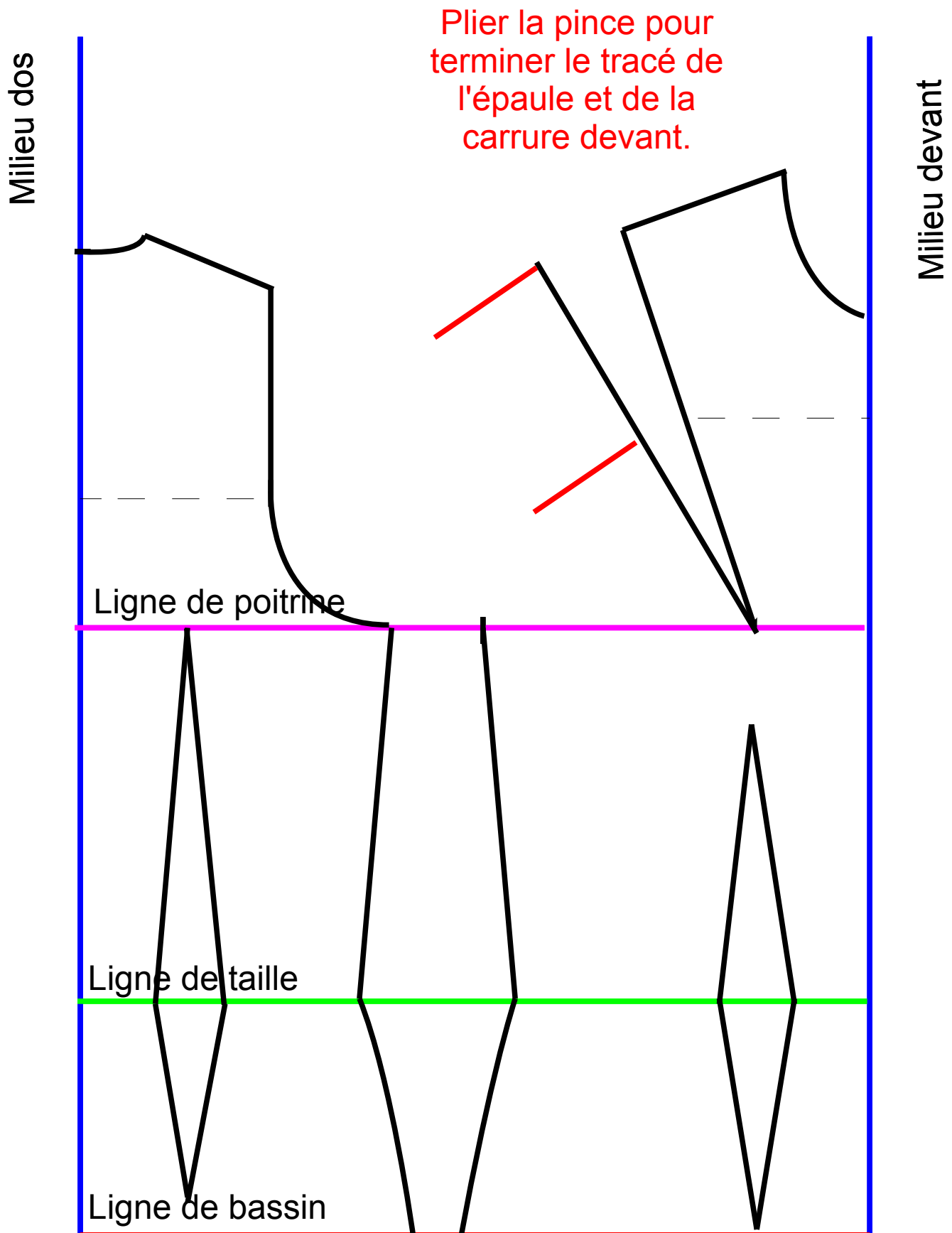
Etape 8 : L'encolure et l'épaule (suite)



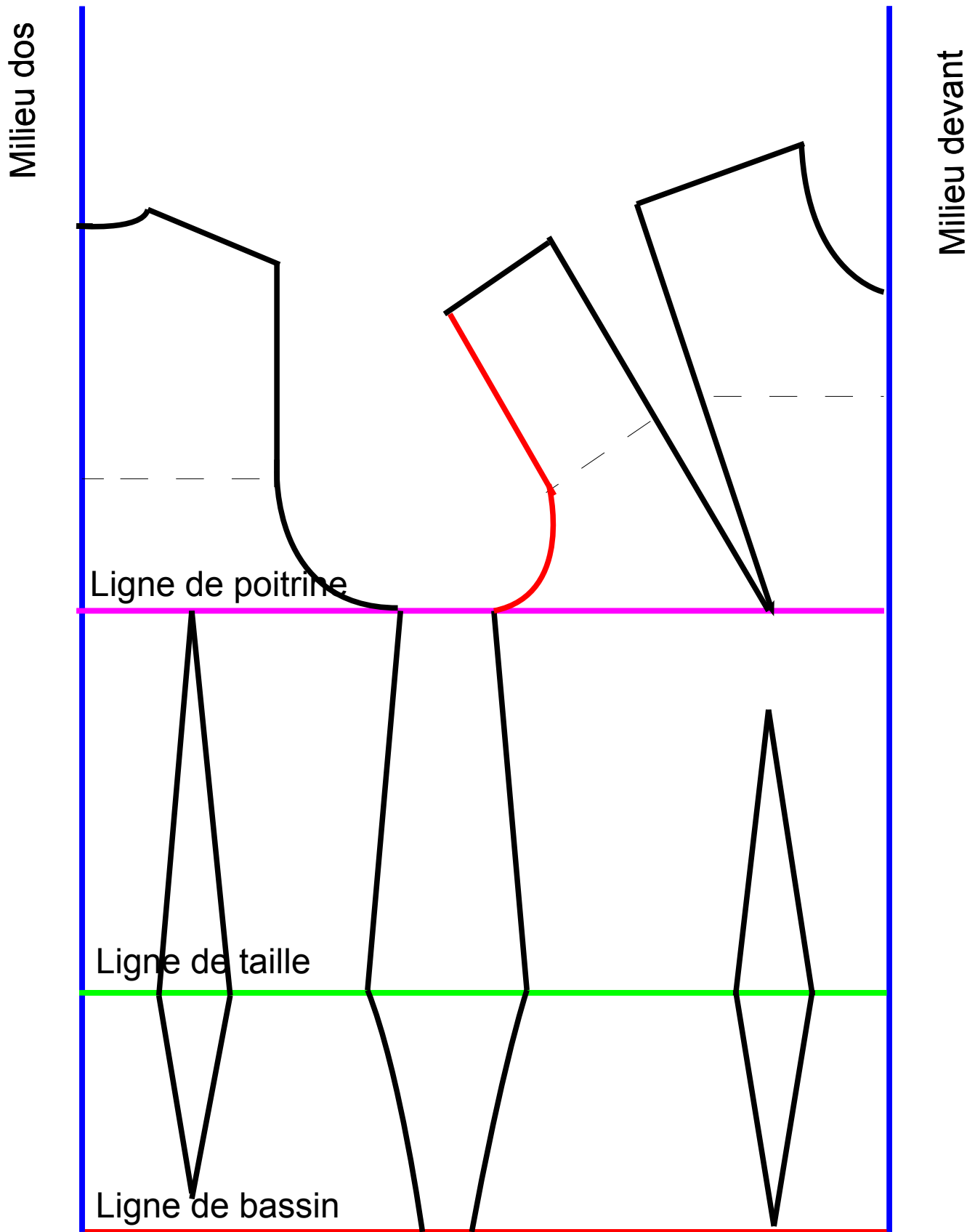
Etape 9 : La pince épaule poitrine



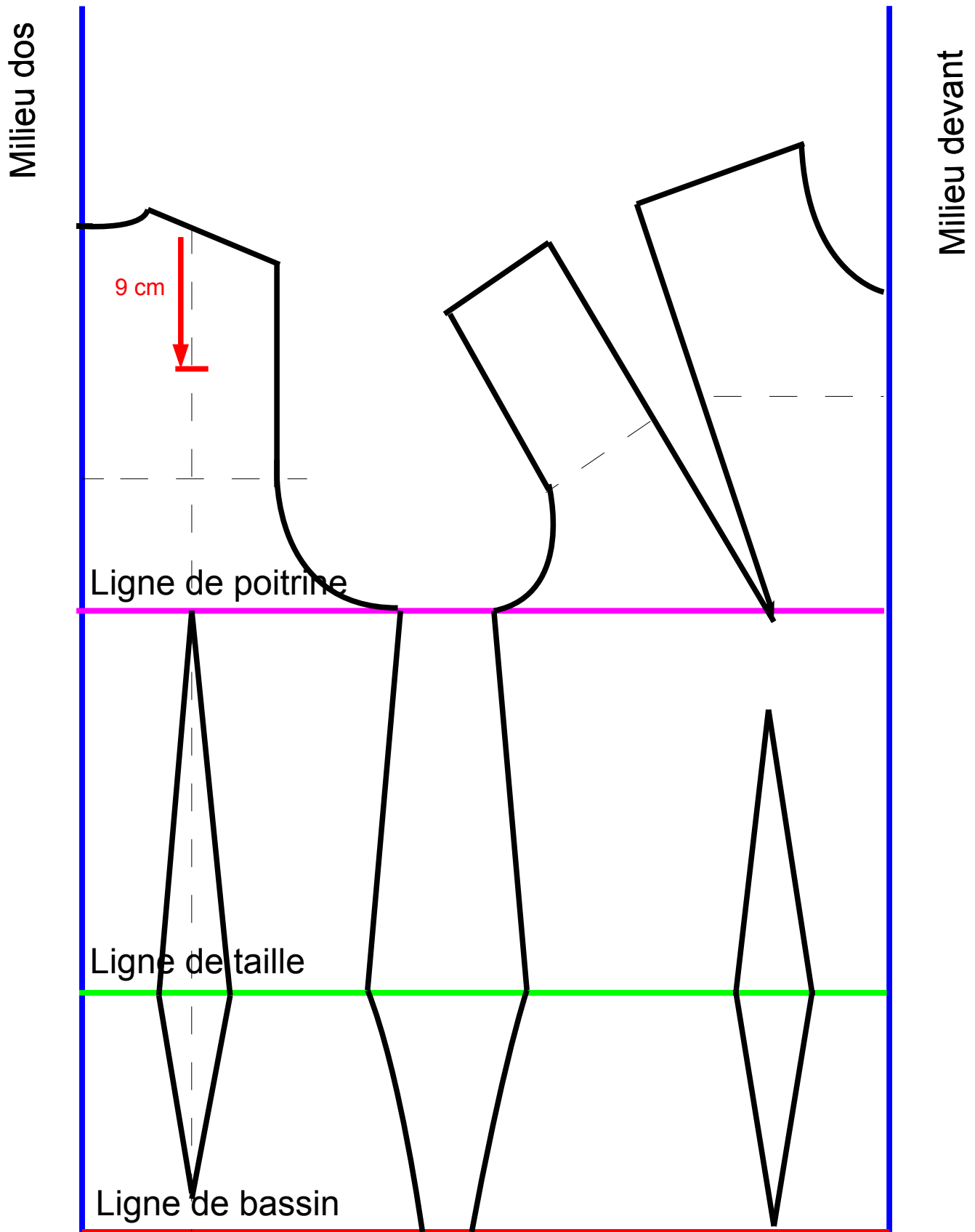
Etape 9 : L'épaule devant



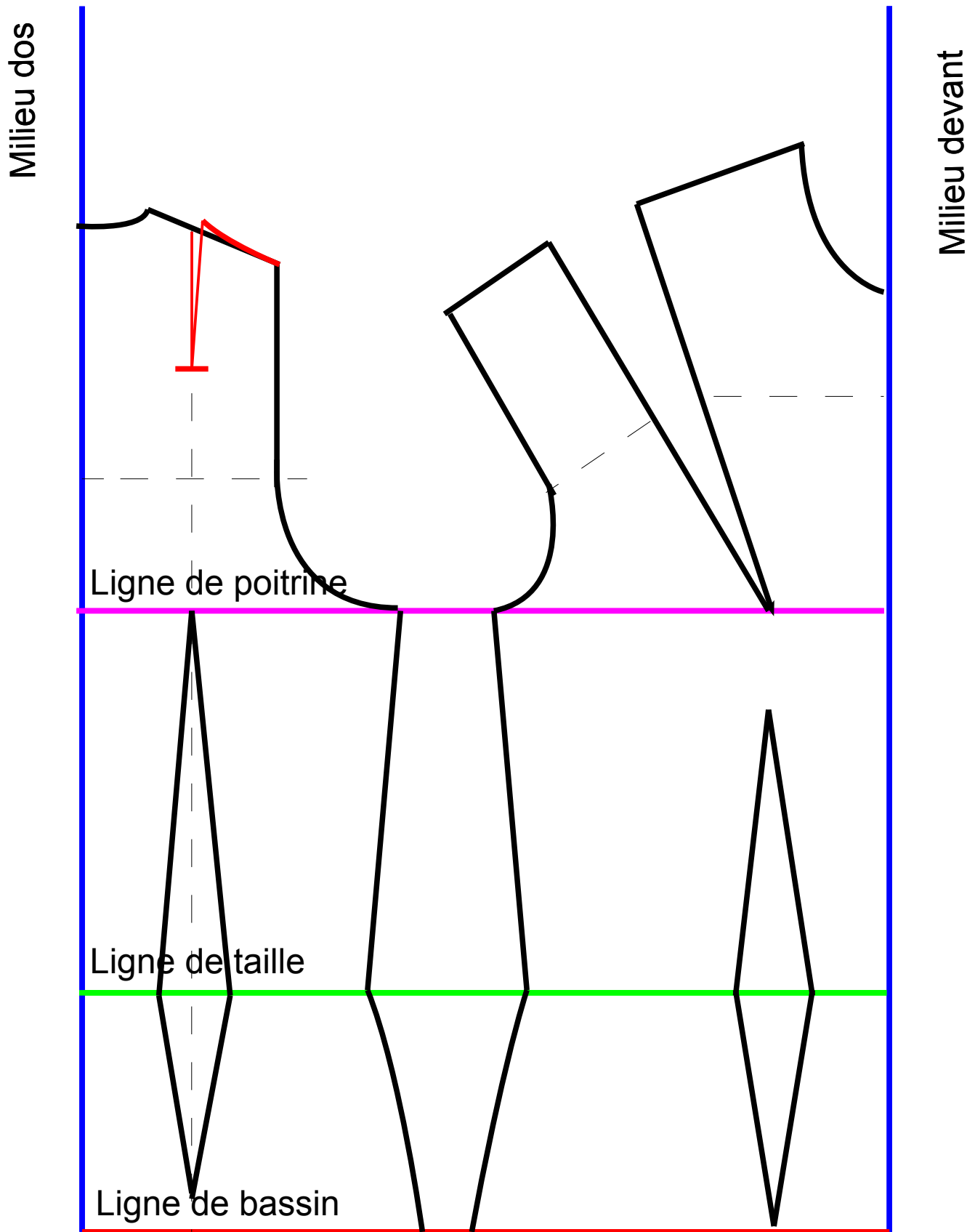
Etape 9 : L'épaule devant (suite)



Etape 10 : La pince épaule dos



Etape 10 : La pince épaule dos (suite)



Etape 10 : La pince épaule dos (suite)

