

<http://cathy73broderies.canalblog.com/>



Silhouettes hirondelles



74x79 points



61x91 points



94x57 points



75x53 points



95x72 points

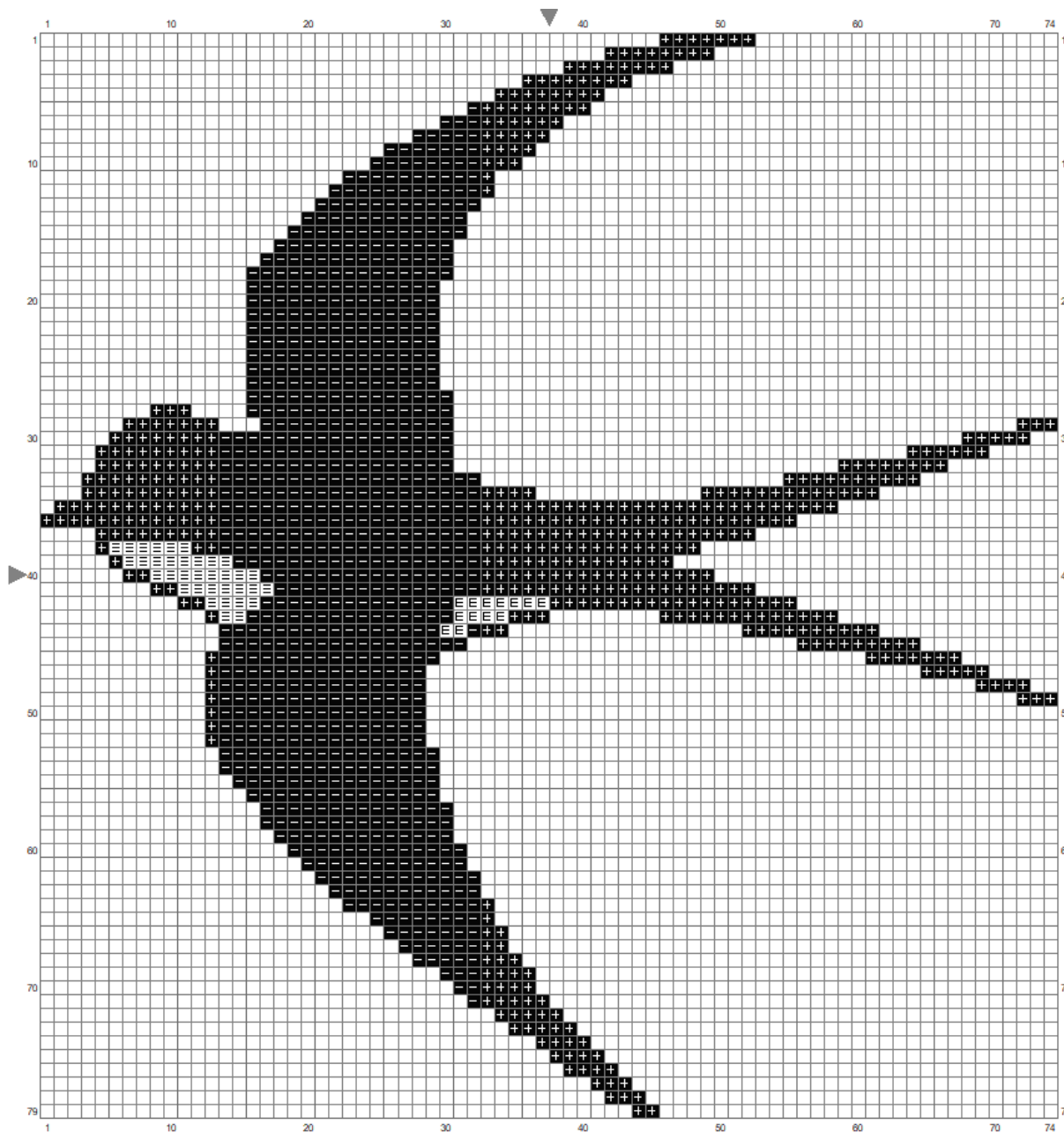


67x68 points

Pour chaque modèle, 2 couleurs (noir et blanc)

Si vous préférez faire du point arrière en noir pour le dessous du ventre, remplacer les quelques points noirs en blanc, ça donnera plus de volume (idem pour les 6 modèles)

1



Stitch Count: 74w x 79h

Cloth: Aida Cloth's Color: White

Finished Size: 10.57 cm x 11.28 cm

(7 linen thread/cm)

Total 2 Colors

Color Table (DMC)

Cross Stitch

310 (1342 ct)

B5200 (48 ct)

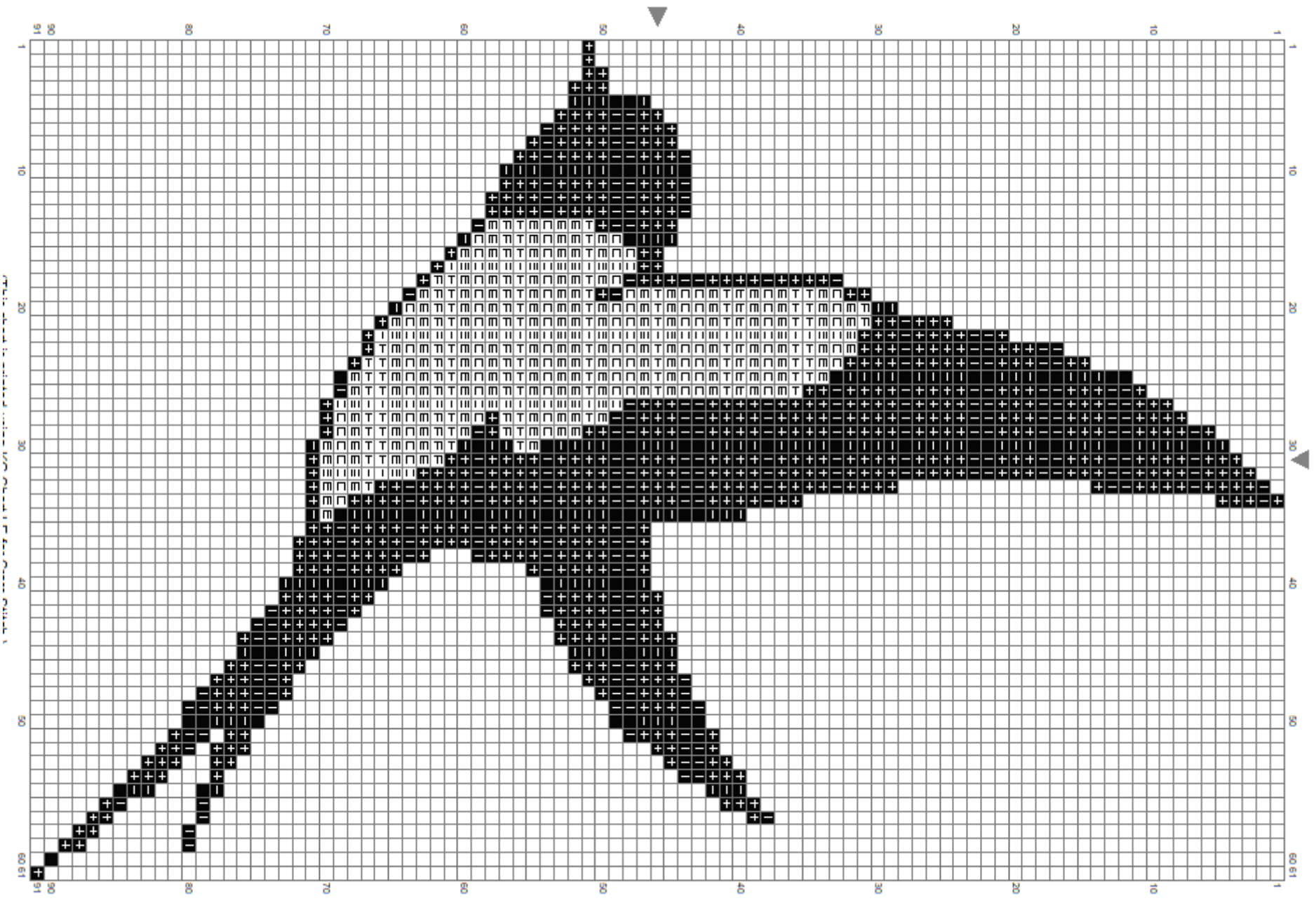
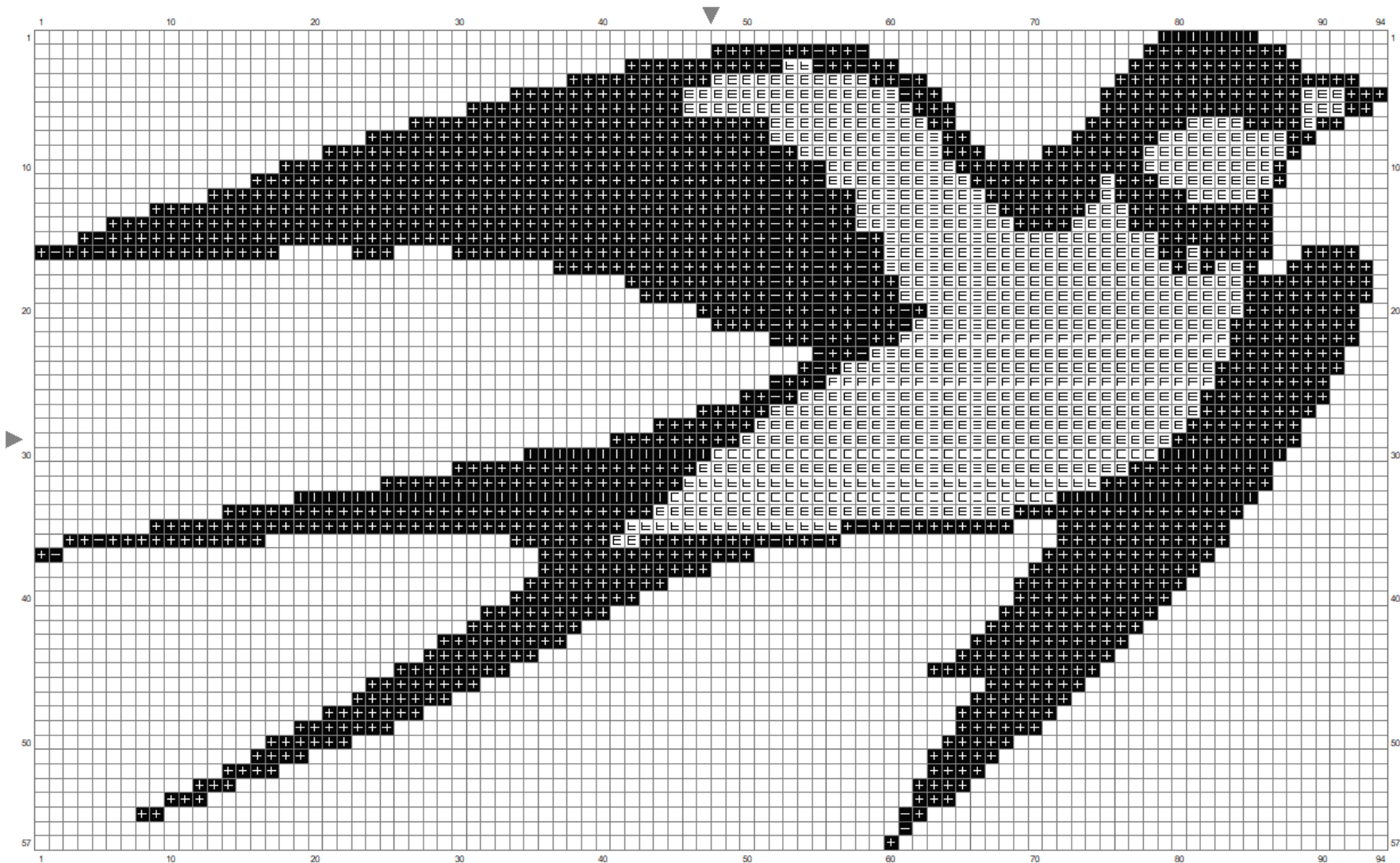


Figure 1: A grid-based plot showing a complex, fractal-like pattern. The grid is labeled with coordinates from 1 to 91 on both the horizontal and vertical axes. The pattern consists of a central horizontal band with two large, curved, wing-like structures extending upwards and downwards. The pattern is composed of small black squares and plus signs (+) on a white background. Two grey triangles point towards the center of the grid from the top and right sides.





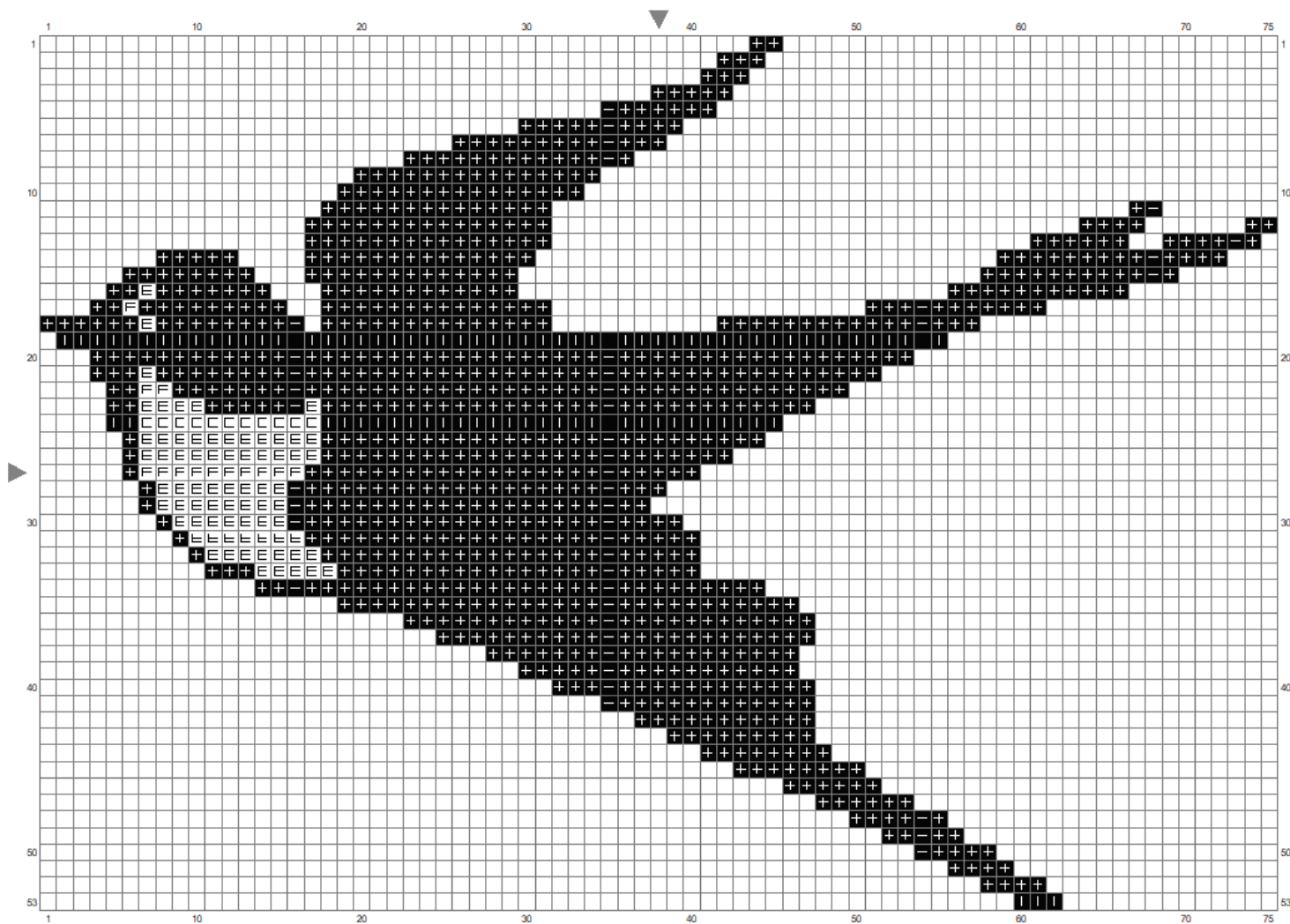
Finished Size: 13.42 cm x 8.14 cm (7 linen thread/cm)

Total 2 Colors

Color Table (DMC)

Cross Stitch

-  310 (1511 ct)
-  B5200 (719 ct)



Stitch Count: 75w x 53h

Cloth: Aida Cloth's Color: White

Finished Size: 10.71 cm x 7.57 cm

(7 linen thread/cm)

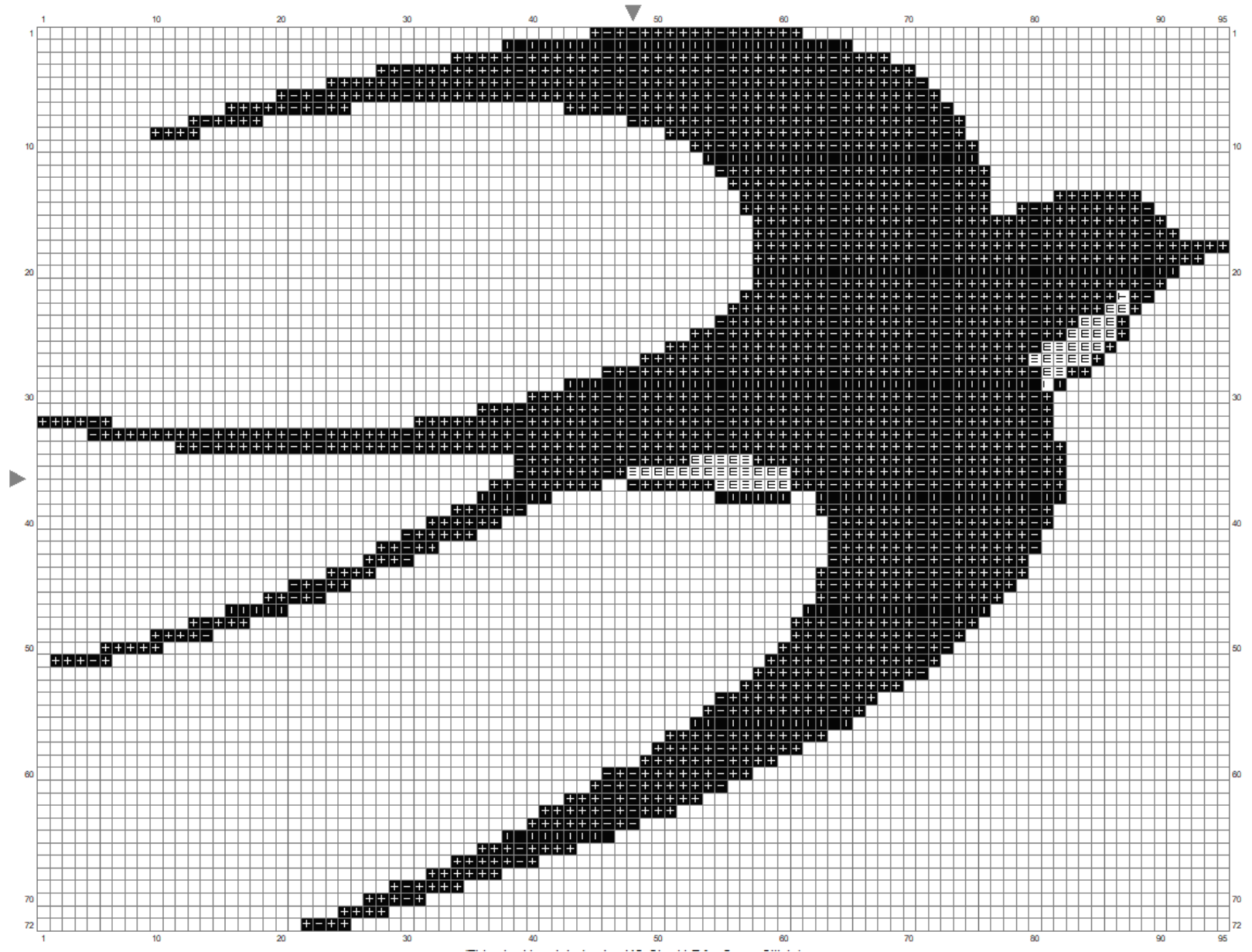
Total 2 Colors

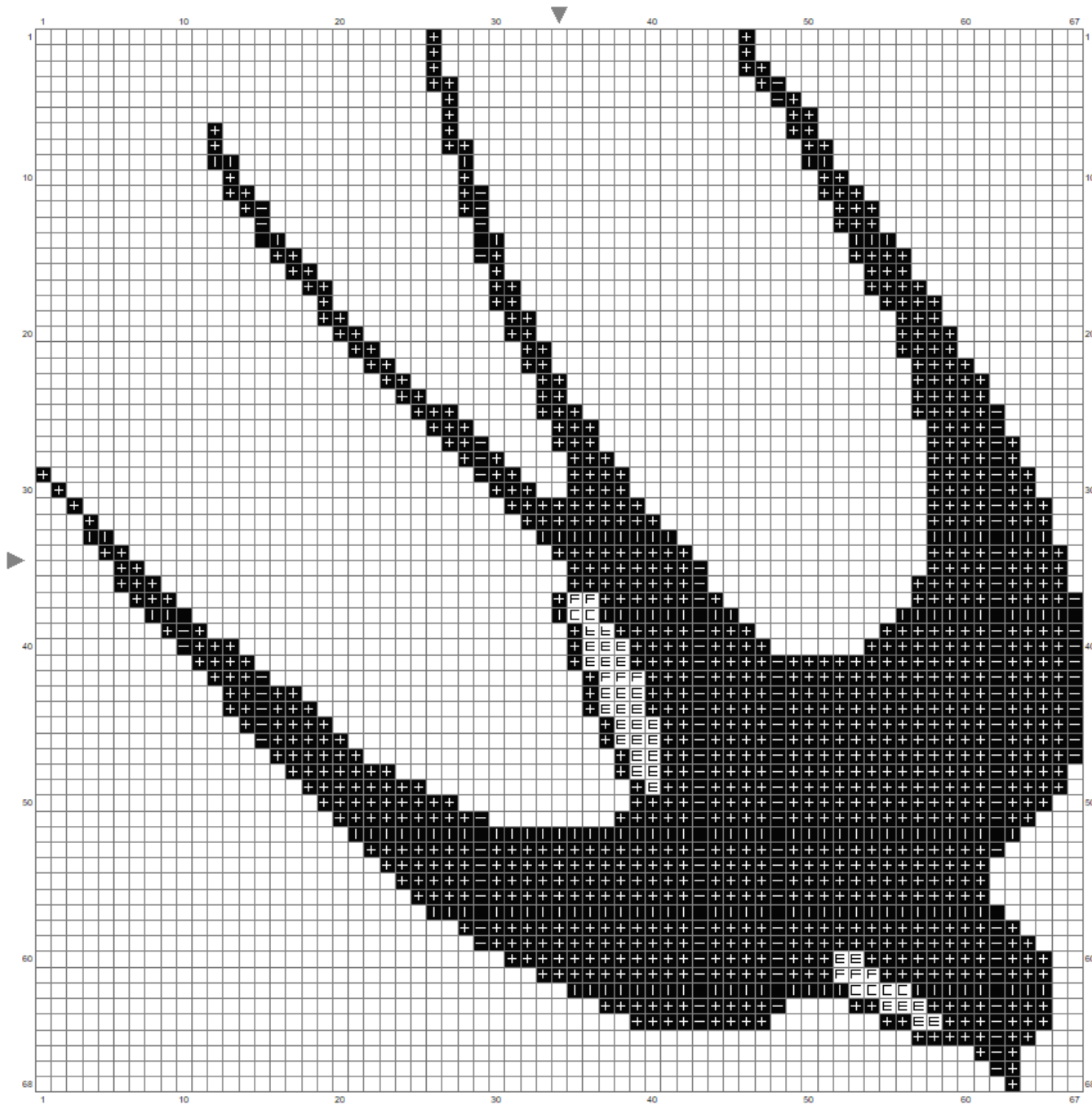
Color Table (DMC)

Cross Stitch

310 (1064 ct)

B5200 (96 ct)





Bon courage !!

cathy.savoie@hotmail.fr