

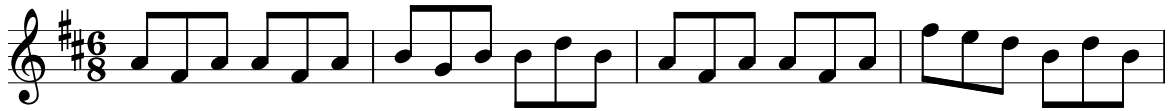
Carolán's Draught

The musical score for "Carolán's Draught" is written in G major (one sharp) and 4/4 time. It consists of six staves of treble clef notation. The first staff begins with a quarter rest followed by a quarter note G, then a series of eighth notes. The second staff concludes with a double bar line and repeat dots. The third staff features a triplet of eighth notes marked with a '3' below. The fourth staff continues with eighth notes and quarter notes. The fifth staff shows a mix of eighth and quarter notes. The sixth staff ends with a double bar line and repeat dots.

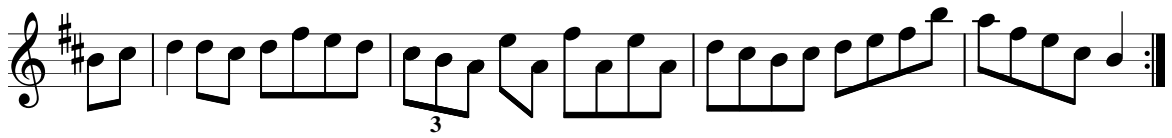
Kid on the Mountain

The image displays a musical score for the piece "Kid on the Mountain". It consists of five staves of music, all written in treble clef. The key signature is one sharp (F#), and the time signature is 9/8. The first staff begins with a treble clef, a sharp sign, and a 9/8 time signature. The music is composed of eighth and sixteenth notes, with some rests. The score concludes with a double bar line and repeat dots. The subsequent four staves continue the melody with similar rhythmic patterns and note values, also ending with double bar lines and repeat dots.

Lark in the Morning



Musical Priest



Rights of Man

The image displays a musical score for the piece "Rights of Man". It consists of four staves of music, all written in treble clef with a key signature of one sharp (F#) and a time signature of 4/4. The first staff begins with a treble clef, a sharp sign, and a 4/4 time signature. The music is composed of eighth and sixteenth notes, with some beamed eighth notes. The second staff ends with a double bar line and repeat dots. The third and fourth staves continue the melodic line, with the fourth staff also ending with a double bar line and repeat dots.