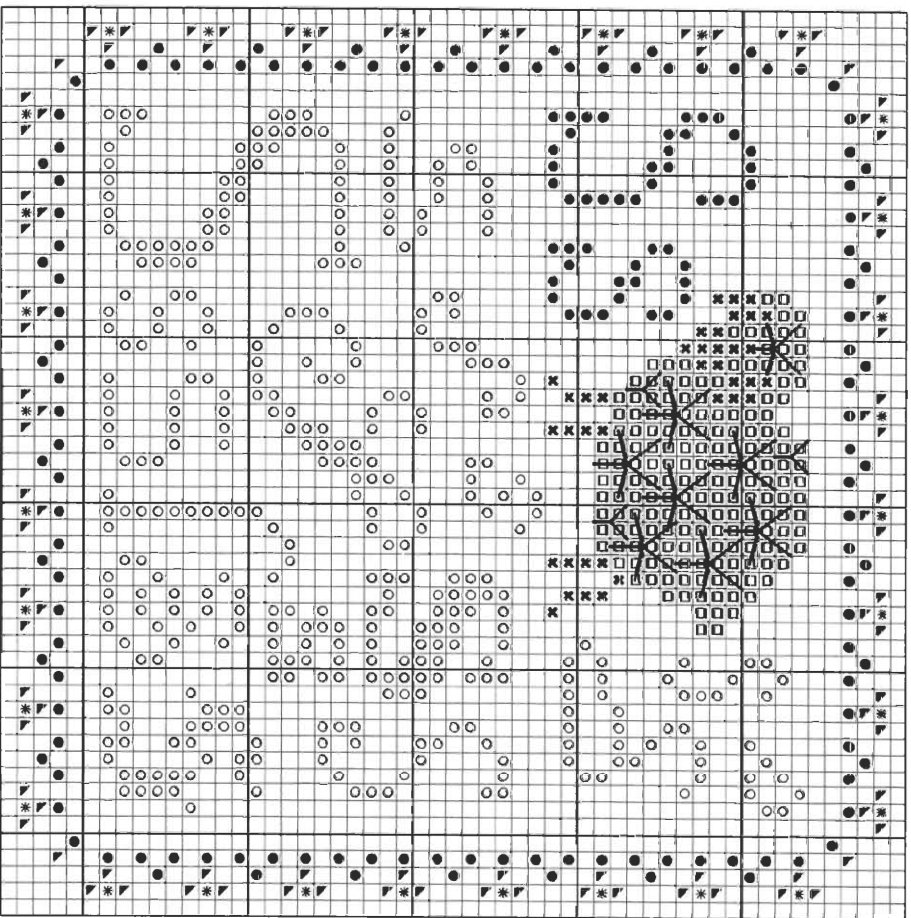


“S” is for Sheep & Spider Web Roses

Stitch count: 53h x 53w – approx. 4”h x 4”w stitched over 2 threads on 28ct Clay Cashel linen from Zweigart (#3281-715)

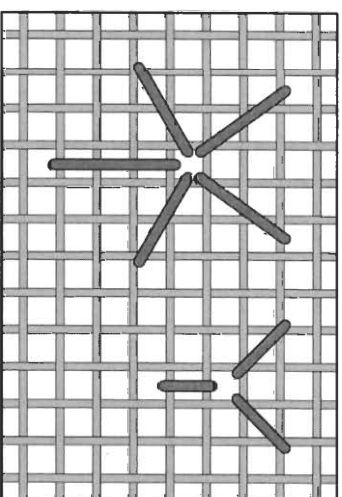


- Rainbow Gallery Fibers - 1 card each**
- E837 Elegance™ Sea Green – 1 strand (or 2 ply S837)
 - M829 Mandarin Floss Lite Sage – 2 ply
 - ✱ M898 Mandarin Floss Dark Taupe – 2 ply
 - AP51 Petite Alpaca White – 1 strand
 - ▲ SK28 Sparklei Braid Shimmer Violet – 1 strand
 - * S1068 Splendor® Pale Maize – 2 ply

After completing all cross stitches, use 1 strand of AP51 White Alpaca for the woven spider web rose stitches. Make the larger ones first; then fill in any spaces with small ones until you get the effect you want.

Spider Web Roses

Stitch a base of 5 “legs” beginning with a “Y” then adding the other two legs. With the same length of thread, come up near the center and begin weaving over and under the leg stitches – always keeping your threaded needle on the surface. Weave around and around until you get the legs filled in. The small ones take a bit of effort to get the weaving to lay flat; just be patient



NOTE: Grid lines in stitch diagram represent one thread of your evenweave or linen fabric.

See many more of our designs and learn more about our products at www.rainbowgallery.com

ERICA MICHAELS
NEEDLEART DESIGNS

See more designs at www.ericamichaels.com

Model framed by Lynne's Custom Framing, Clarksville TN
East Side Mouldings #OCON, www.eastsidemouldings.com
Individual frame sizes: 5-3/4" square