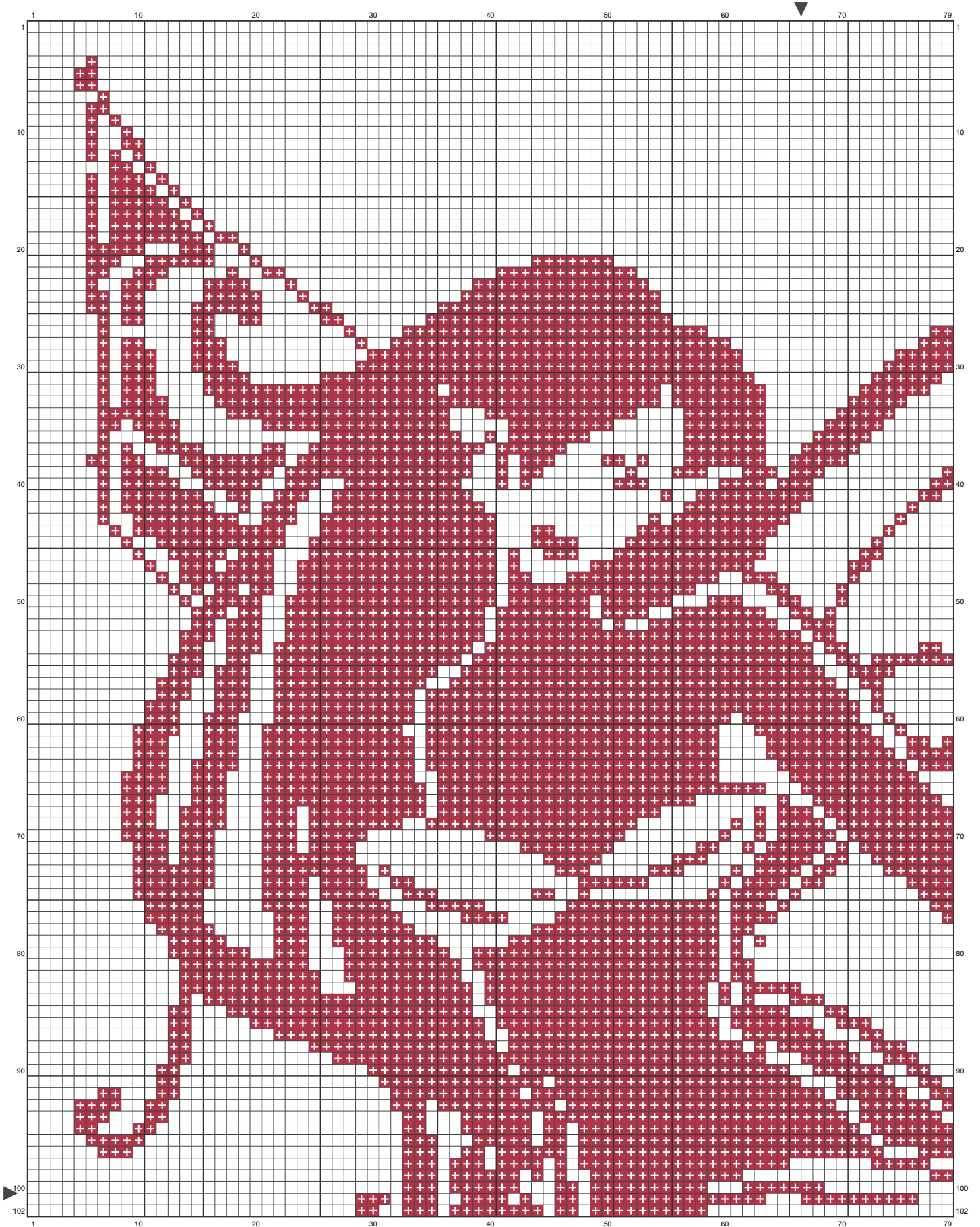


Fée Fairy

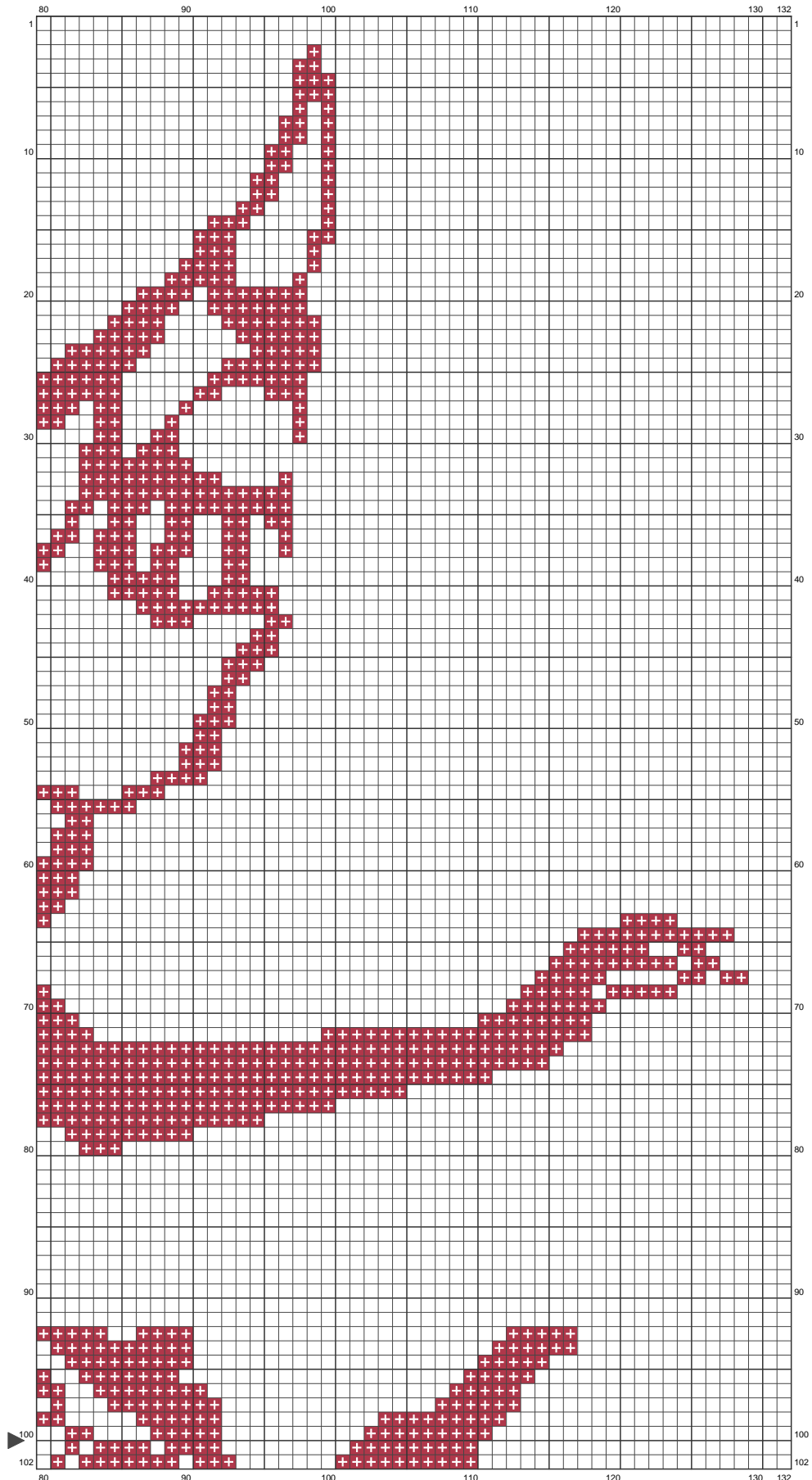


Fée Fairy



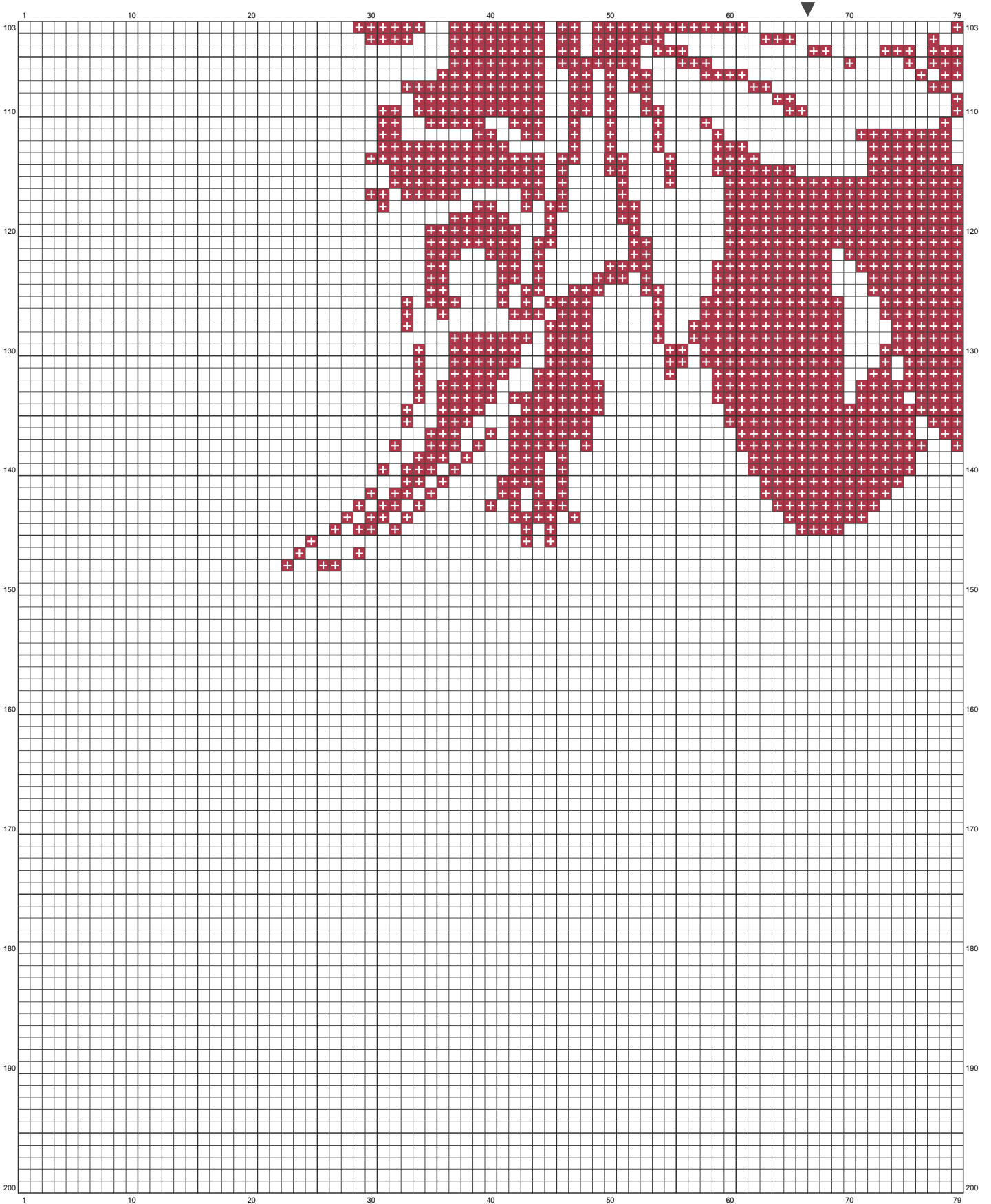
(This chart is printed using KG-Chart LE for Cross Stitch.)

Fée Fairy



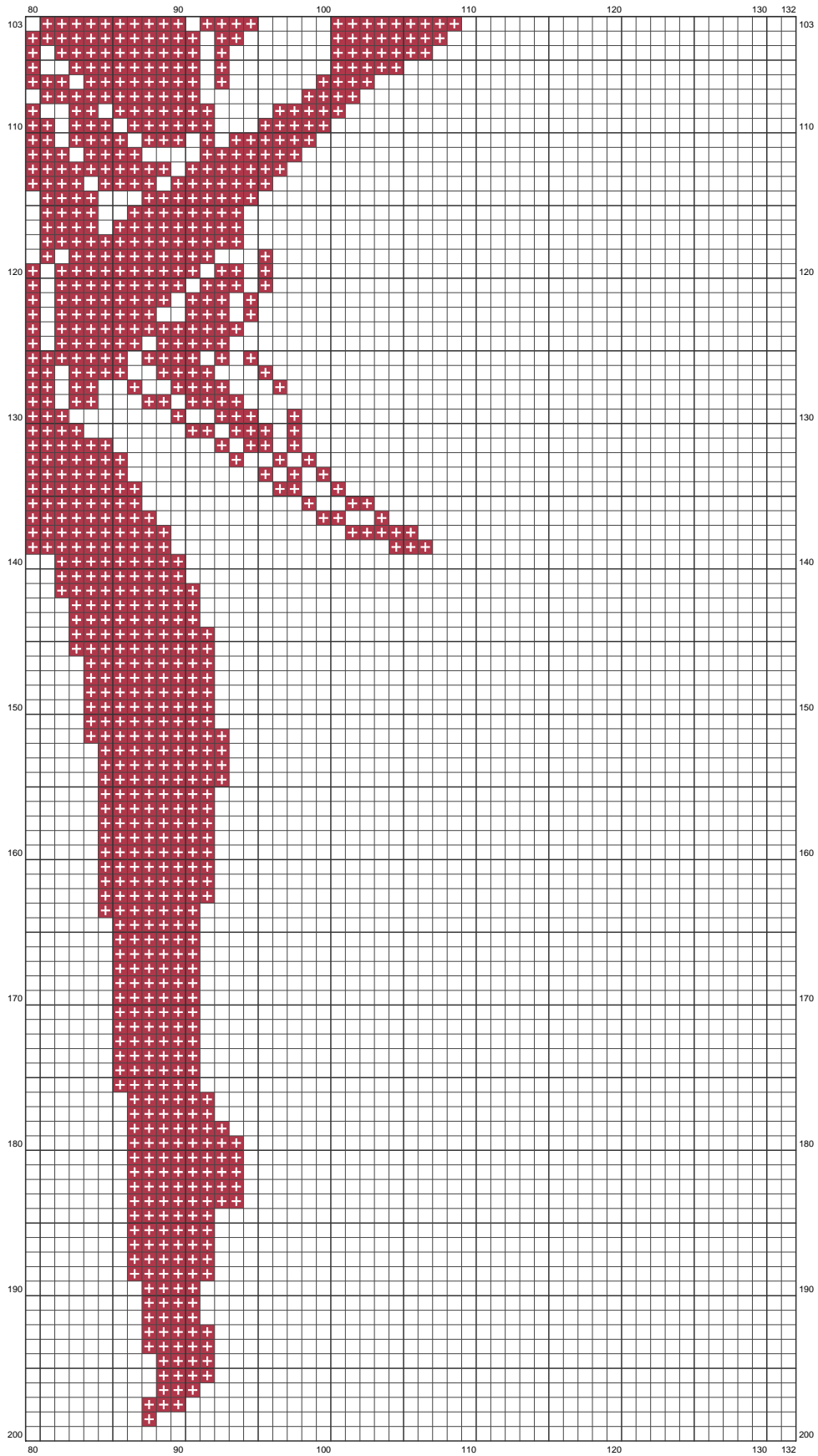
(This chart is printed using KG-Chart LE for Cross Stitch.)

Fée Fairy



(This chart is printed using KG-Chart LE for Cross Stitch.)

Fée Fairy



(This chart is printed using KG-Chart LE for Cross Stitch.)

Fée Fairy

Stitch Count:132w x 200h

Cloth:Belfast Cloth's Color:White

Finished Size: 24 cm x 36.3 cm (11 linen thread/cm)

Total 1 Colors

Color Table (DMC)

Cross Stitch



355

(6476 ct)

Comment

La couleur du motif n'est qu'indicative. Vous pouvez la modifier selon votre goût personnel.

Ceci est une grille gratuite mise à disposition des brodeuses.

Copyright Ludivineuh

@ : ludivineuh@hotmail.com Blog : <http://ludivineuh.canalblog.com/>