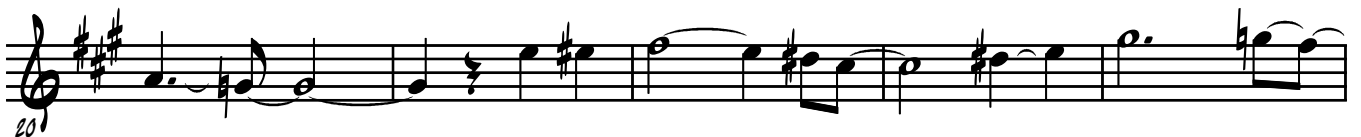
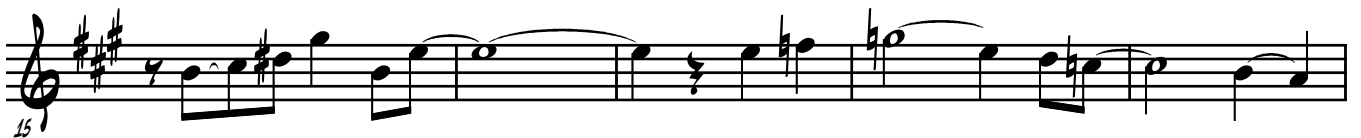
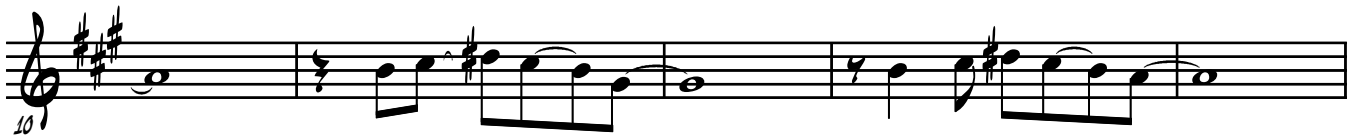
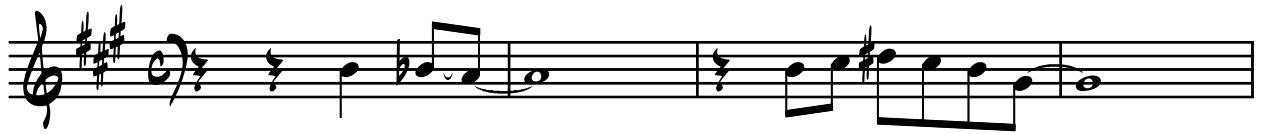


# SAXOPHONE ALTO

# C'EST SI BON

HENRI NETTI



Musical notation for the second measure of the piece 'C'EST SI BON'. The notation is written on a single staff in treble clef. The key signature consists of two sharps (F# and C#). The first measure contains a half note on the G line (G4) with a fermata above it. A slur extends from this note to the second measure. The second measure contains three eighth notes: the first is on the G line (G4), the second is on the A space (A4), and the third is on the B space (B4). The piece concludes with a double bar line.