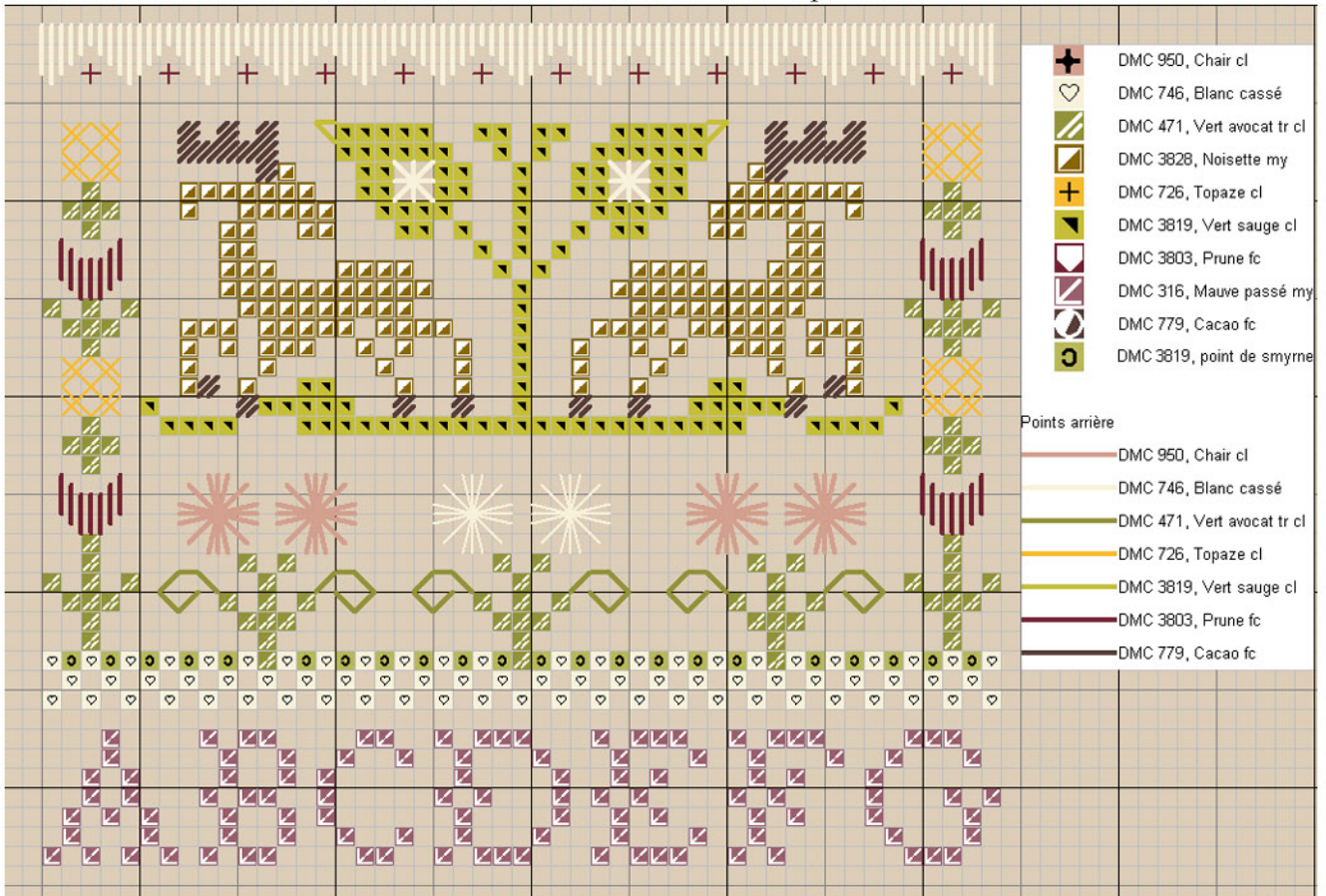


Mystery Sampler (Version originale)

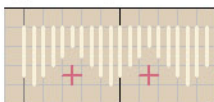
Stitch count 49 width and 214 high

The mystery sampler is stitch with 1 strand over 2 fabrics threads .

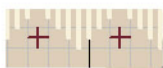
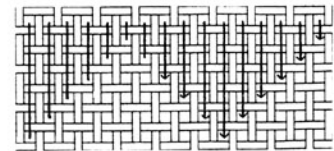
In certain case it 'll be with 2 strands over 2 fabric threads but we 'll precise it.



Special point



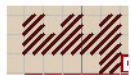
Border with Satin stitch: 2 strands DMC 746



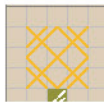
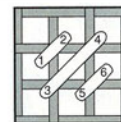
Vertical cross stitch :
1 strand DMC 316



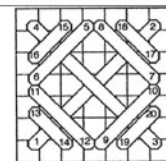
Leaves points :
backstitch with 1 strand DMC 3819



Mosaic point :
thread DMC 779 (horn and hoof)



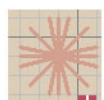
Rice stitch
with 1 strand DMC 726



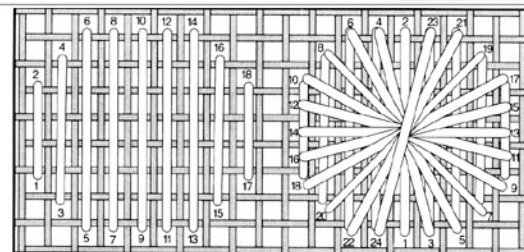
Satin stitch 2 strands DMC 3803
(follow the diagram)



In the 2 big leaves of the top
Algerian eyelet stitch with 1
strand DMC 746



Padded rhodes stitch with 1 strand :
White chart DMC 746
Pinkish chart DMC 950



*For this stitch follow the chart on the right,
start by the satin stitch(diagram 1)
and then stitch the Rhodes stitch(diagram 2)*



Flowers stems : backstitch DMC 471

in the colour key
is a Smyrna stitch 1 strand

