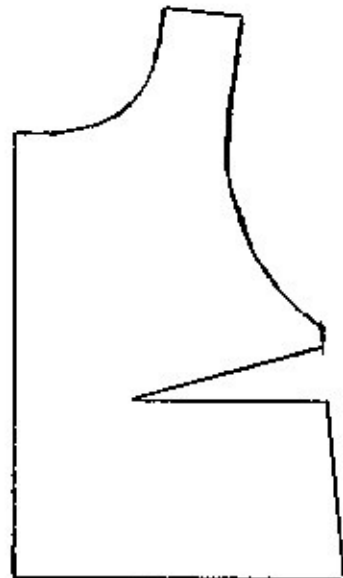


PARTIE 2
DEVANT
A2

B2

BOLERO
T38

PARTIE 1
DEVANT



↓ +3,9 cm

A1

B1

↓ +3,6
cm

PARTIE 1
DOS

BOLERO
T38

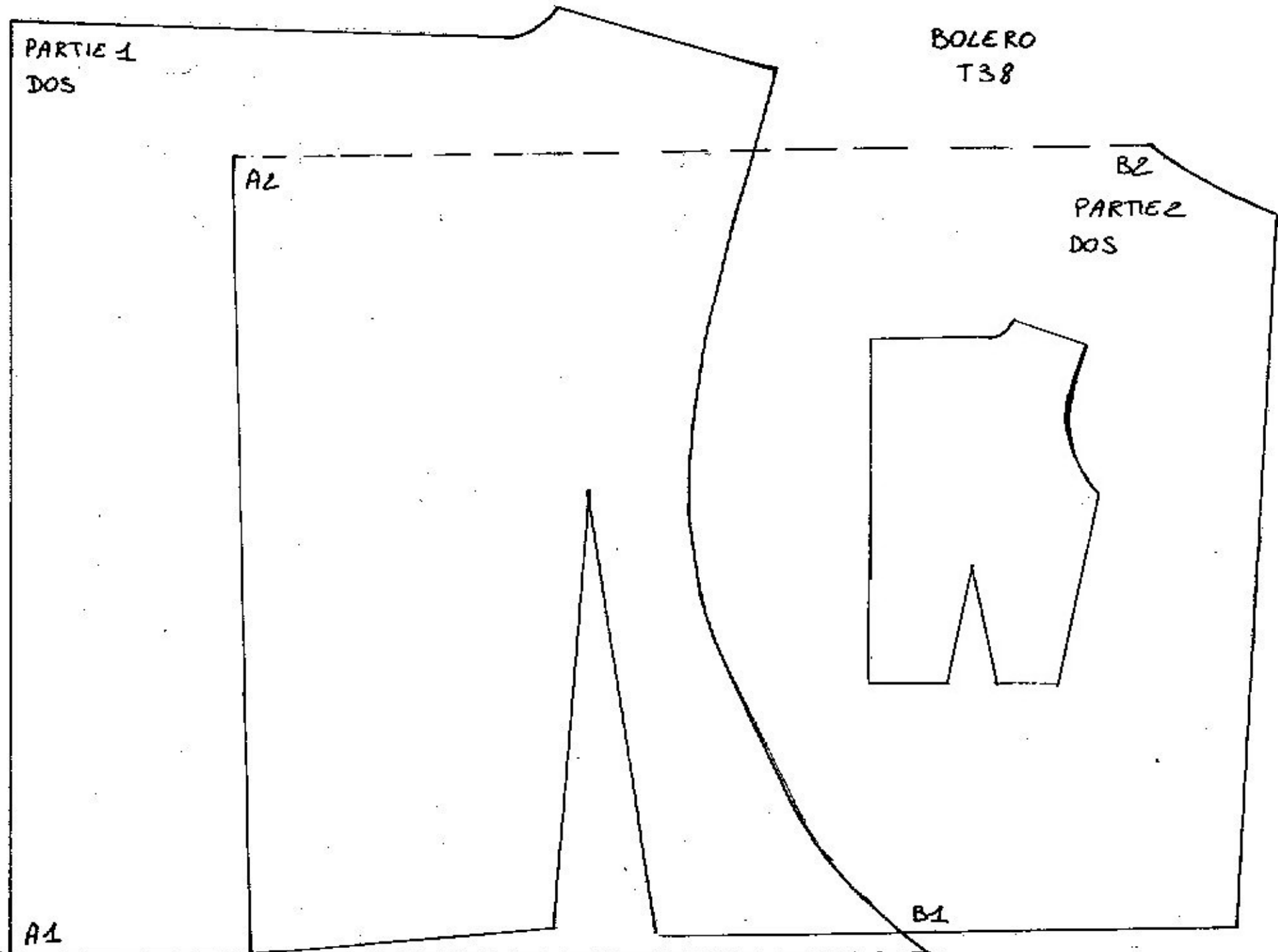
A2

B2

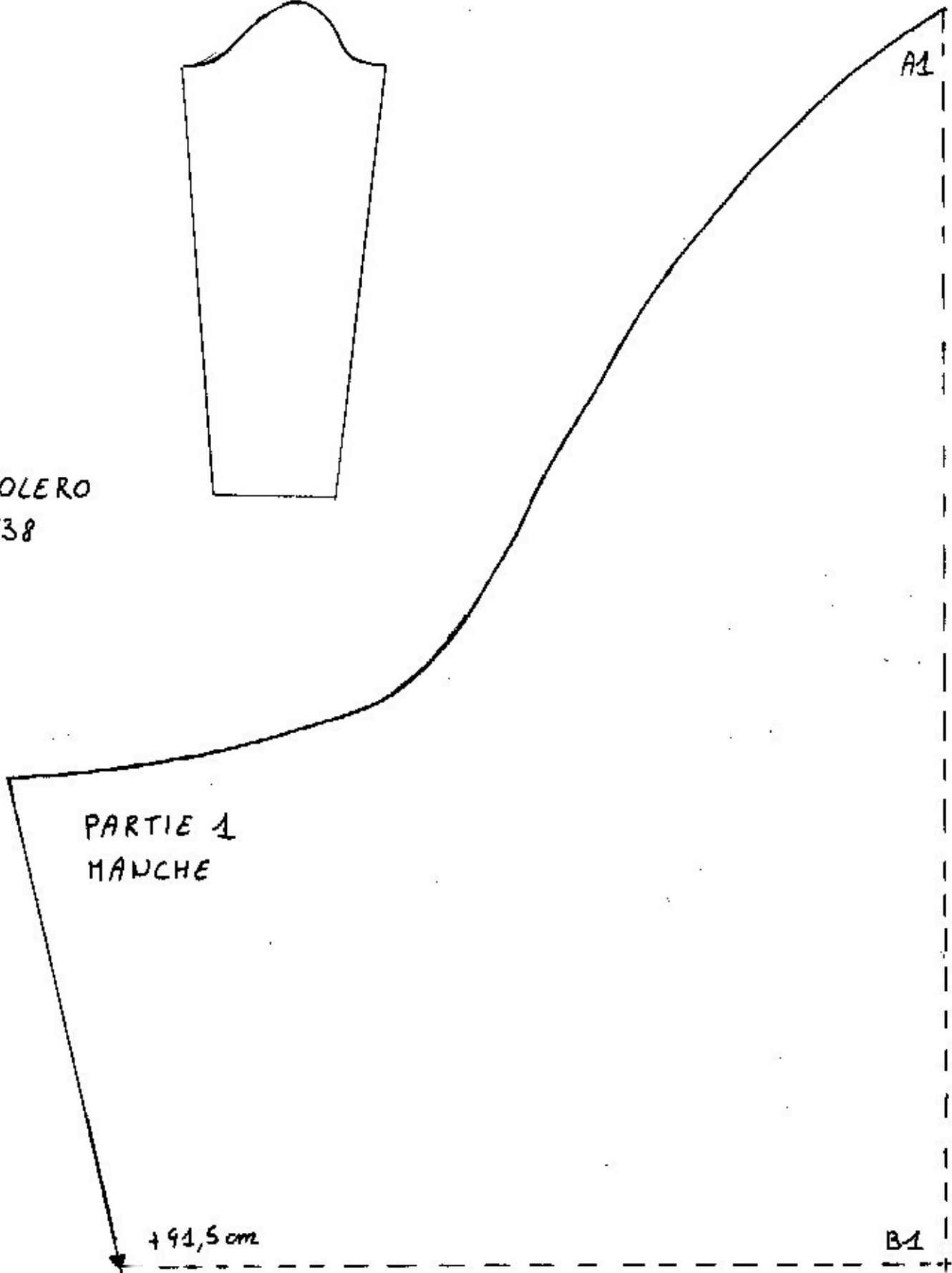
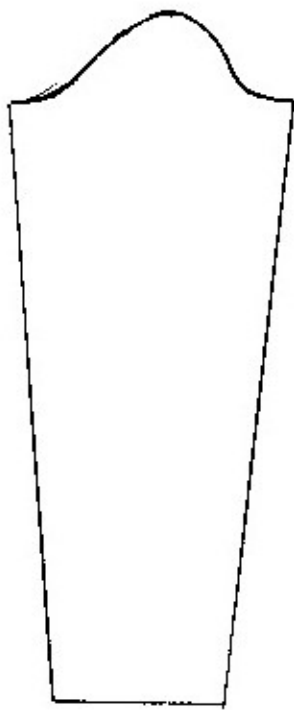
PARTIE 2
DOS

A1

B1



BOLERO
T38



PARTIE 1
MANCHE

→ 91,5 cm

A1

B1

AZ

DROIT FIG

BOLERO

T38

Remarque =

longueur poignet = 29 cm

PARTIE
MANCHE

BZ

+93,5 cm

+93,4 cm

