

Le 02/06/2012 - Début analyse à 12:45:07  
FEN = 3N4/3KP2P/8/2QBk1P1/5R2/3PN3/7B/4R3 w - -  
Les Blancs jouent et font mat en 1

> 1.h7-h8=D+ (1/77)  
>>> Solution 1 : 1.h7-h8=D+ ! (00:00:00) <<<

> 1.e7-e8=D+ (2/77)  
>>> Solution 2 : 1.e7-e8=D+ ! (00:00:00) <<<

> 1.e7-e8=T+ (3/77)  
>>> Solution 3 : 1.e7-e8=T+ ! (00:00:00) <<<

> 1.h7-h8=F+ (4/77)  
>>> Solution 4 : 1.h7-h8=F+ ! (00:00:00) <<<

> 1.Tf4-a4+ (5/77)  
>>> Solution 5 : 1.Tf4-a4+ ! (00:00:00) <<<

> 1.Tf4-f3+ (6/77)  
>>> Solution 6 : 1.Tf4-f3+ ! (00:00:00) <<<

> 1.Cd8-f7+ (7/77)  
>>> Solution 7 : 1.Cd8-f7+ ! (00:00:00) <<<

> 1.Cd8-c6+ (8/77)  
>>> Solution 8 : 1.Cd8-c6+ ! (00:00:00) <<<

> 1.Tf4-f2+ (9/77)  
>>> Solution 9 : 1.Tf4-f2+ ! (00:00:00) <<<

> 1.Fd5-h1+ (10/77)  
>>> Solution 10 : 1.Fd5-h1+ ! (00:00:00) <<<

> 1.Fd5-g2+ (11/77)  
>>> Solution 11 : 1.Fd5-g2+ ! (00:00:00) <<<

> 1.Fd5-f3+ (12/77)  
>>> Solution 12 : 1.Fd5-f3+ ! (00:00:00) <<<

> 1.Tf4-f1+ (13/77)  
>>> Solution 13 : 1.Tf4-f1+ ! (00:00:00) <<<

> 1.Tf4-g4+ (14/77)  
>>> Solution 14 : 1.Tf4-g4+ ! (00:00:00) <<<

> 1.Tf4-h4+ (15/77)  
>>> Solution 15 : 1.Tf4-h4+ ! (00:00:00) <<<

> 1.Ce3-g4+ (16/77)  
>>> Solution 16 : 1.Ce3-g4+ ! (00:00:00) <<<

> 1.Ce3-d1+ (17/77)  
>>> Solution 17 : 1.Ce3-d1+ ! (00:00:00) <<<

> 1.Ce3-g2+ (18/77)  
>>> Solution 18 : 1.Ce3-g2+ ! (00:00:00) <<<

> 1.Ce3-f1+ (19/77)  
>>> Solution 19 : 1.Ce3-f1+ ! (00:00:00) <<<

> 1.Ce3-f5+ (20/77)  
>>> Solution 20 : 1.Ce3-f5+ ! (00:00:00) <<<

> 1.Ce3-c4+ (21/77)  
>>> Solution 21 : 1.Ce3-c4+ ! (00:00:00) <<<

> 1.Tf4-c4+ (22/77)  
>>> Solution 22 : 1.Tf4-c4+ ! (00:00:00) <<<

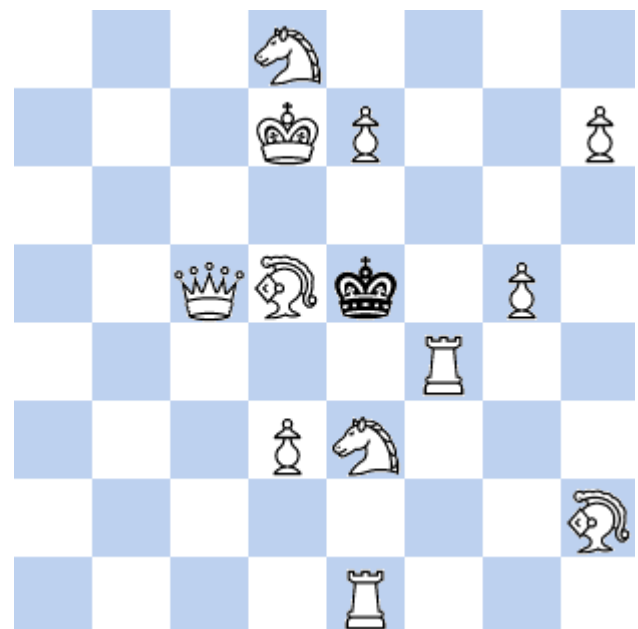
> 1.Tf4-b4+ (23/77)  
>>> Solution 23 : 1.Tf4-b4+ ! (00:00:00) <<<

> 1.Tf4-d4+ (24/77)  
>>> Solution 24 : 1.Tf4-d4+ ! (00:00:00) <<<

> 1.Ce3-c2+ (25/77)  
>>> Solution 25 : 1.Ce3-c2+ ! (00:00:00) <<<

> 1.Tf4-e4+ (26/77)  
>>> Solution 26 : 1.Tf4-e4+ ! (00:00:00) <<<

> 1.Dc5-c7+ (27/77)



C+ (12 + 1)

#1

>>> Solution 27 : 1.Dc5-c7+ ! (00:00:00) <<<  
> 1.Tf4-f6+ (28/77)  
>>> Solution 28 : 1.Tf4-f6+ ! (00:00:00) <<<  
> 1.d3-d4+ (29/77)  
>>> Solution 29 : 1.d3-d4+ ! (00:00:00) <<<  
> 1.Tf4-f5+ (30/77)  
>>> Solution 30 : 1.Tf4-f5+ ! (00:00:00) <<<  
> 1.Tf4-f7+ (31/77)  
>>> Solution 31 : 1.Tf4-f7+ ! (00:00:00) <<<  
> 1.Dc5-d4+ (32/77)  
>>> Solution 32 : 1.Dc5-d4+ ! (00:00:00) <<<  
> 1.Dc5-d6+ (33/77)  
>>> Solution 33 : 1.Dc5-d6+ ! (00:00:00) <<<  
> 1.Tf4-f8+ (34/77)  
>>> Solution 34 : 1.Tf4-f8+ ! (00:00:00) <<<  
> 1.Dc5-c3+ (35/77)  
>>> Solution 35 : 1.Dc5-c3+ ! (00:00:00) <<<  
> 1.Fd5-c4+ (36/77)  
>>> Solution 36 : 1.Fd5-c4+ ! (00:00:00) <<<  
> 1.Fd5-f7+ (37/77)  
>>> Solution 37 : 1.Fd5-f7+ ! (00:00:00) <<<  
> 1.Fd5-e6+ (38/77)  
>>> Solution 38 : 1.Fd5-e6+ ! (00:00:00) <<<  
> 1.Fd5-e4+ (39/77)  
>>> Solution 39 : 1.Fd5-e4+ ! (00:00:00) <<<  
> 1.Fd5-g8+ (40/77)  
>>> Solution 40 : 1.Fd5-g8+ ! (00:00:00) <<<  
> 1.Fd5-a8+ (41/77)  
>>> Solution 41 : 1.Fd5-a8+ ! (00:00:00) <<<  
> 1.Fd5-c6+ (42/77)  
>>> Solution 42 : 1.Fd5-c6+ ! (00:00:00) <<<  
> 1.Fd5-b3+ (43/77)  
>>> Solution 43 : 1.Fd5-b3+ ! (00:00:00) <<<  
> 1.Fd5-a2+ (44/77)  
>>> Solution 44 : 1.Fd5-a2+ ! (00:00:00) <<<  
> 1.Fd5-b7+ (45/77)  
>>> Solution 45 : 1.Fd5-b7+ ! (00:00:00) <<<  
> 1.h7-h8=T (46/77)  
...accorde le pat !  
> 1.e7-e8=F (47/77)  
...accorde le pat !  
> 1.e7-e8=C (48/77)  
...accorde le pat !  
> 1.h7-h8=C (49/77)  
...accorde le pat !  
> 1.g5-g6 (50/77)  
...accorde le pat !  
> 1.Fh2-g1 (51/77)  
> 1.Fh2-g3 (52/77)  
...accorde le pat !  
> 1.Dc5-c1 (53/77)  
...accorde le pat !  
> 1.Dc5-c2 (54/77)  
...accorde le pat !  
> 1.Dc5-c4 (55/77)  
...accorde le pat !

> 1.Rd7-c6 (56/77)

...accorde le pat !

> 1.Dc5-c8 (57/77)

...accorde le pat !

> 1.Dc5-c6 (58/77)

...accorde le pat !

> 1.Dc5-b6 (59/77)

...accorde le pat !

> 1.Dc5-a3 (60/77)

...accorde le pat !

> 1.Dc5-b4 (61/77)

...accorde le pat !

> 1.Dc5-a5 (62/77)

...accorde le pat !

> 1.Dc5-b5 (63/77)

...accorde le pat !

> 1.Dc5-a7 (64/77)

...accorde le pat !

> 1.Rd7-c8 (65/77)

...accorde le pat !

> 1.Te1-f1 (66/77)

...accorde le pat !

> 1.Te1-a1 (67/77)

...accorde le pat !

> 1.Te1-b1 (68/77)

...accorde le pat !

> 1.Te1-e2 (69/77)

...accorde le pat !

> 1.Te1-h1 (70/77)

...accorde le pat !

> 1.Te1-g1 (71/77)

...accorde le pat !

> 1.Cd8-b7 (72/77)

...accorde le pat !

> 1.Rd7-c7 (73/77)

...accorde le pat !

> 1.Rd7-e8 (74/77)

...accorde le pat !

> 1.Te1-c1 (75/77)

...accorde le pat !

> 1.Te1-d1 (76/77)

...accorde le pat !

> 1.Cd8-e6 (77/77)

...accorde le pat !

Noeuds (gen) = 78 (00:00:00)

Noeuds (Arb) = 78

Problème démoli : 45 solutions !

Font Chess Condal by Armando H. Marroquin

Akiba 2012 par Fabrice Touvron